

# **1920s Scenes of Rikers Rising from the River**

These images are derived from photos given NYCHS by the Hertzendorfs of Jackson, N. J.

# 1920s Rikers Landfill Scene #1: Overall View



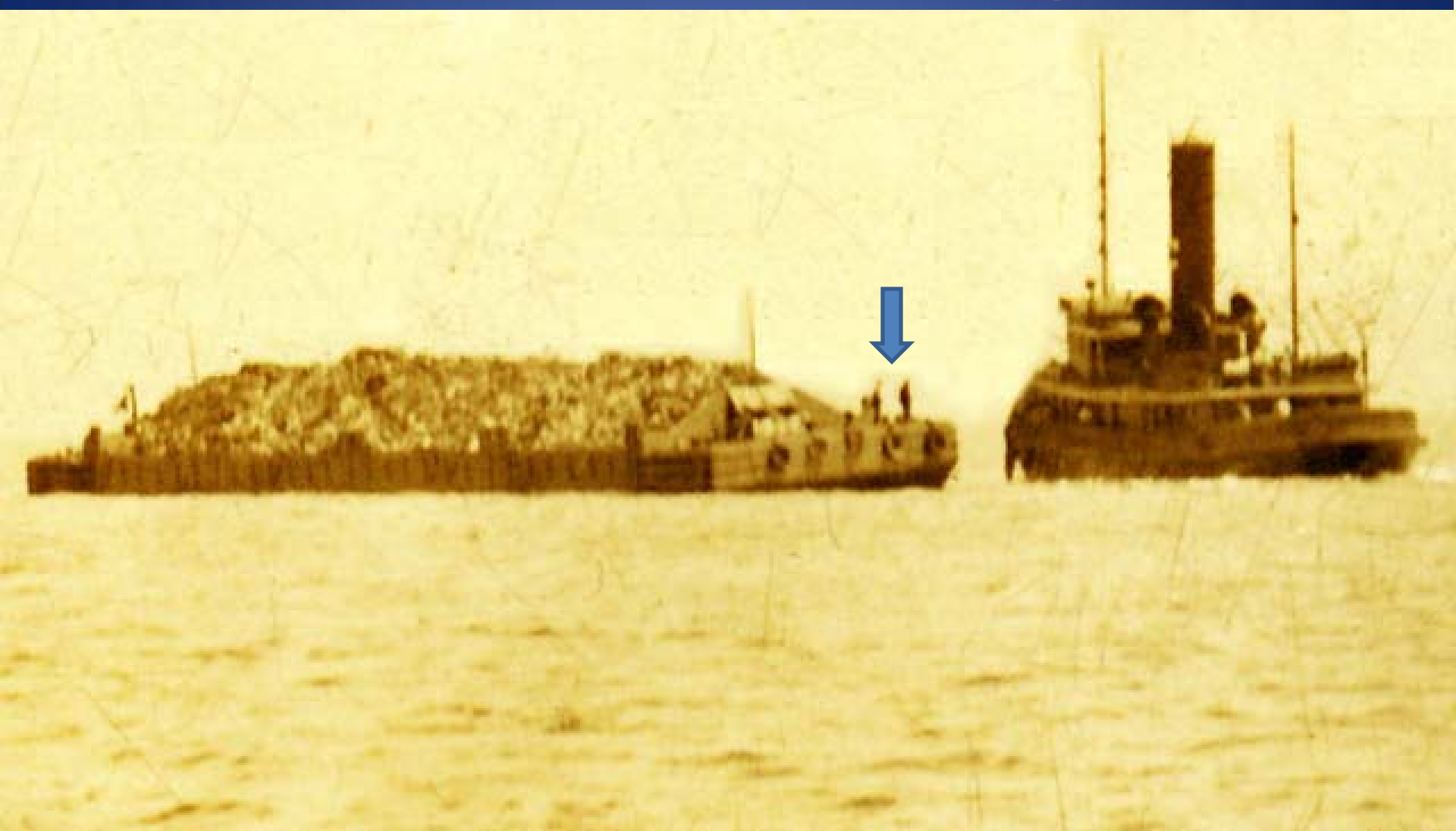
**A tug and three barges, the latter loaded with solid waste materials, are seen bound for Rikers Island. The back of the photo is stamped in red ink 'JUL 1 1925.'**

# 1920s Scene #1: Close-up A (Left Section)



Further-from-tug barges more visible in close-up.

# 1920s Scene #1: Close-up B (Right Section)



**Men on the nearest barge seen apparently talking with men on the tug.**

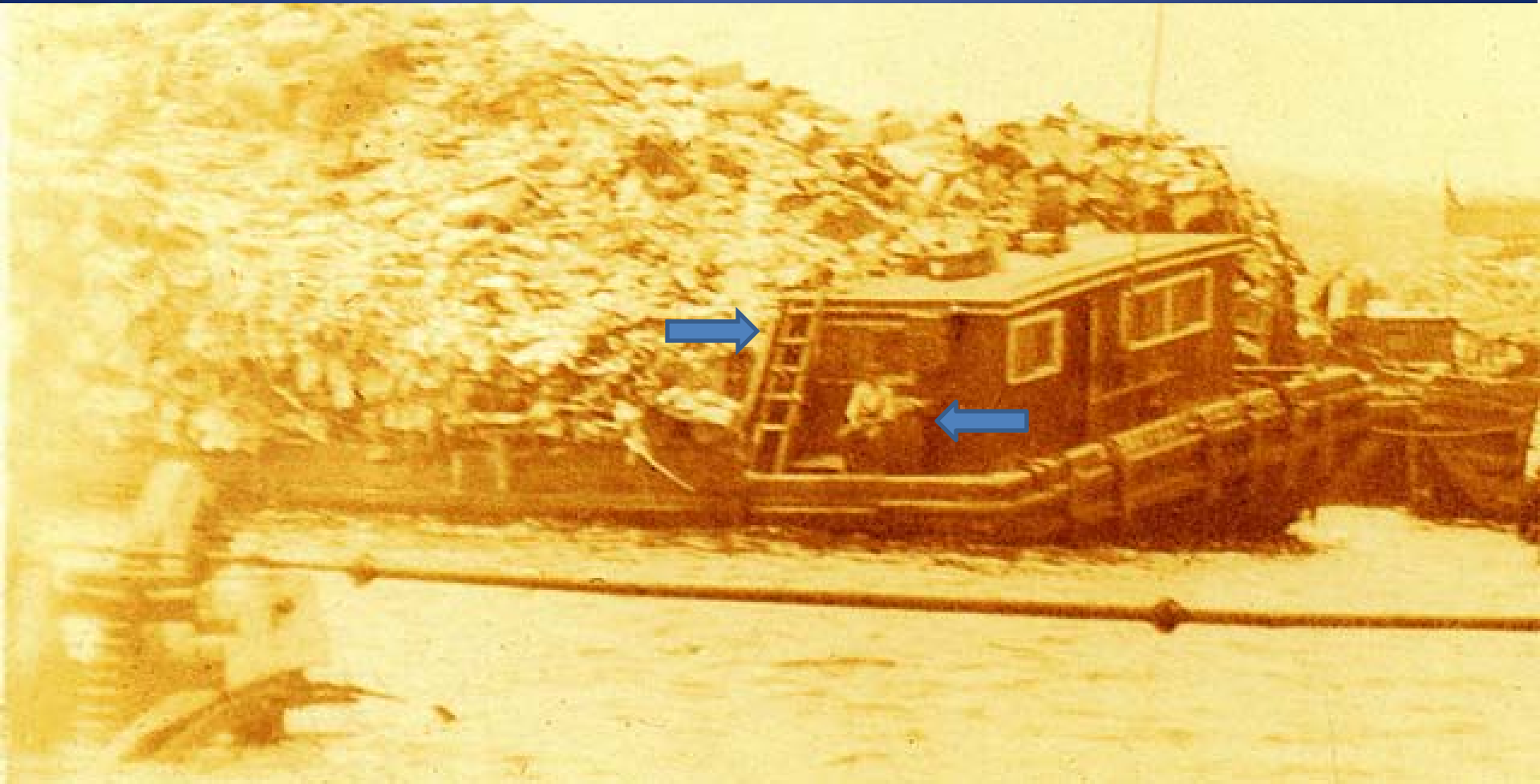
# 1920s Rikers Landfill Scene #2: Overall View



**Line-up of barges loaded with solid waste materials to be used as landfill.**

**Jutting from the water: hardware for the shoal 'cribwork' set to hold the fill from which the 'land' was to be formed.**

# 1920s Scene #2: Close-up A (Left Section)



Man sits outside the barge's shack. Note: (1) ladder for access to the shack's roof; (2) shoal cribwork's above-water hardware.

# 1920s Scene #2: Close-up B (Center Section)



**Lettering on the barge spells 'O'Brien Brothers Contractors.' Note the many boxes making up this barge's load of fill.**

## 1920s Scene #2: Close-up C (Right Section)



Lettering on barge insufficient to determine meaning. Note the barrels and drums mixed with the boxes and other debris on barge.



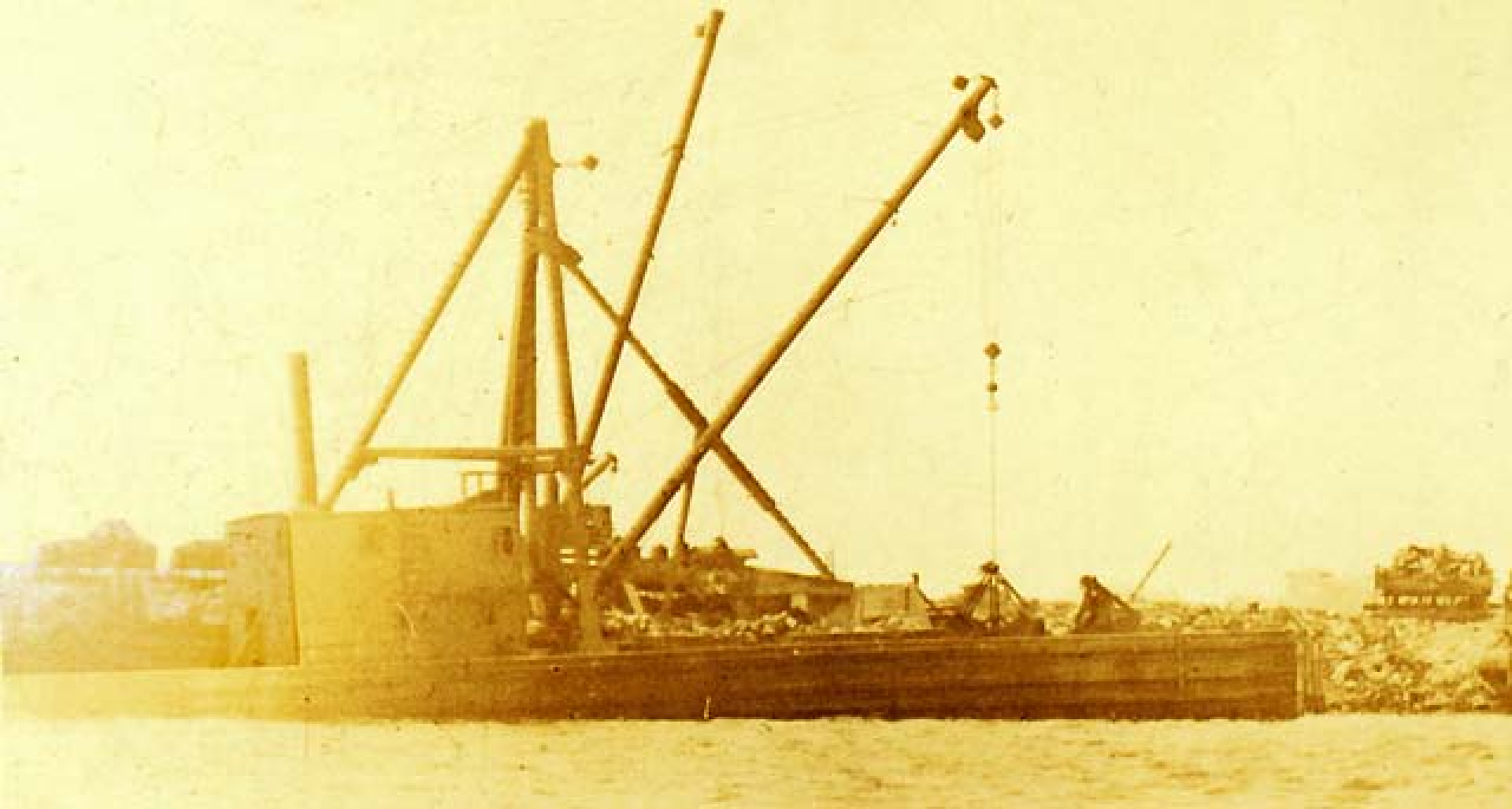
# 1920s Rikers Landfill Scene #3: Overall View



Huge clawed-clam shovels work on lined-up barges loaded with solid waste materials. Jutting from the water far right: hardware for the shoal 'cribwork' to hold the fill.

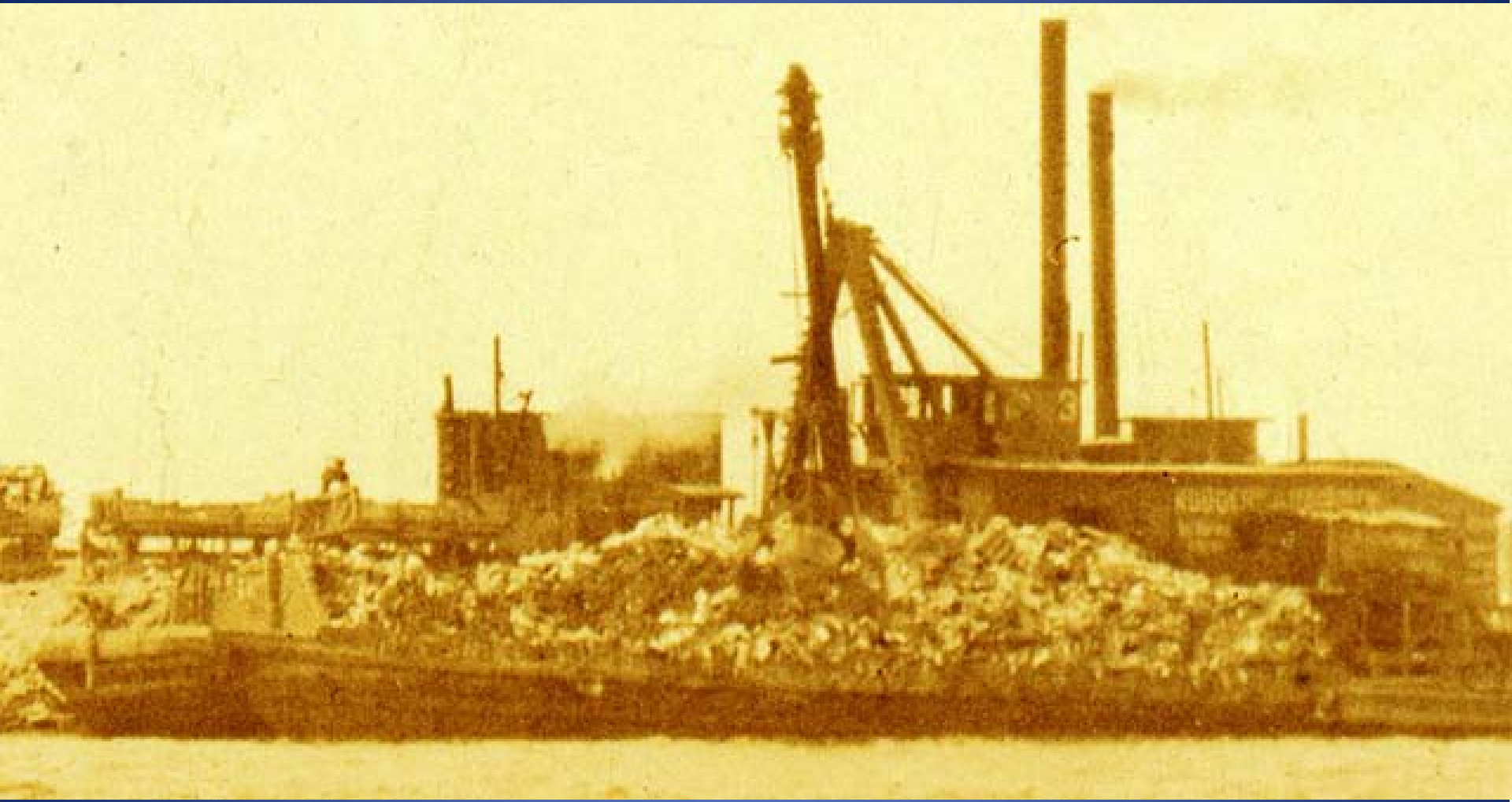
Hand written on photo back: 'Diggers #3 & 4 and Clean-Up diggers at Rikers Island. July 19, 1921.'

# 1920s Scene #3: Close-up A (Far Left Section)



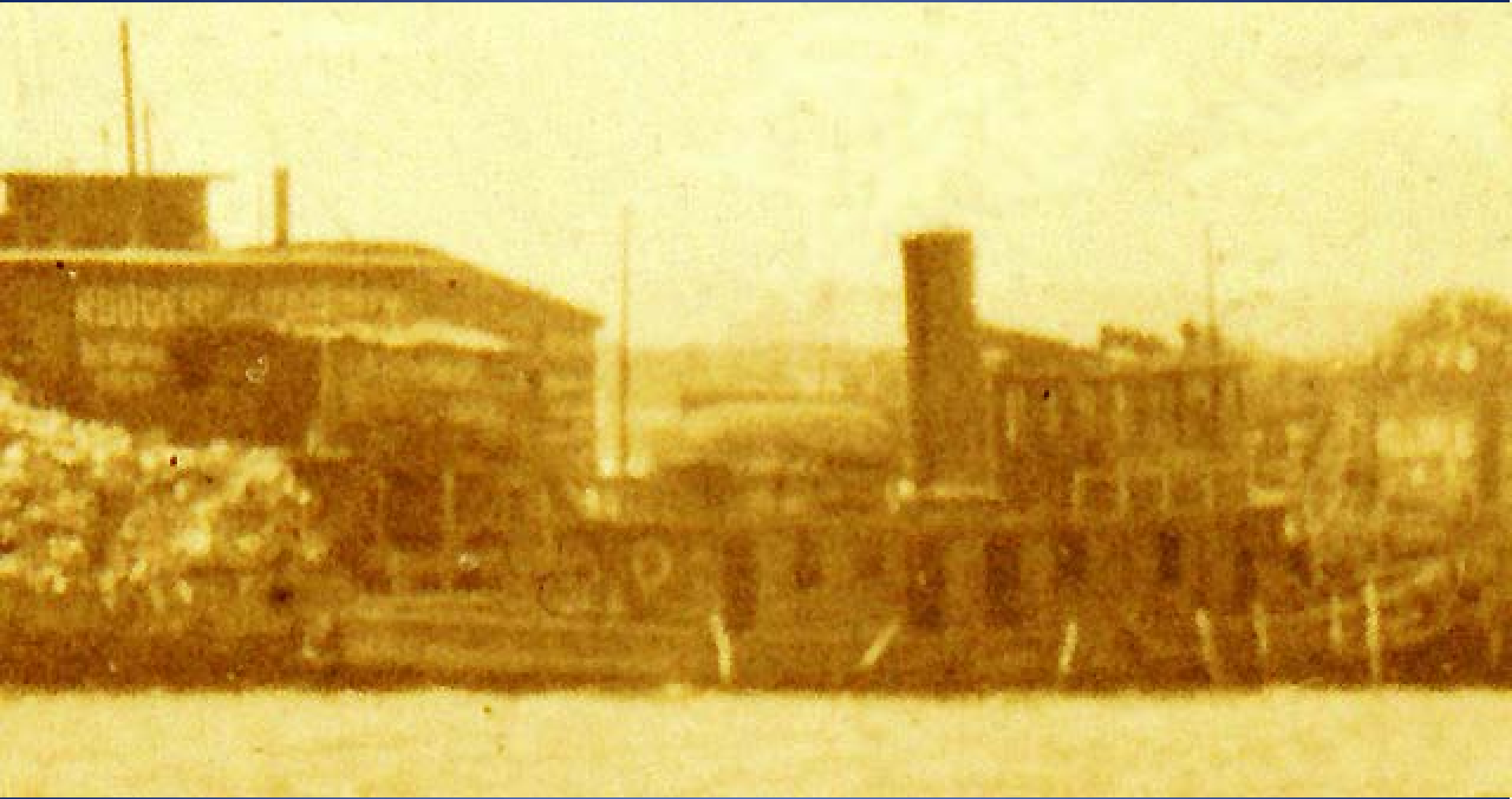
A huge clawed clam-type shovel has nearly emptied a barge of its solid waste cargo.

# 1920s Scene #3: Close-up B (Near Left Section)



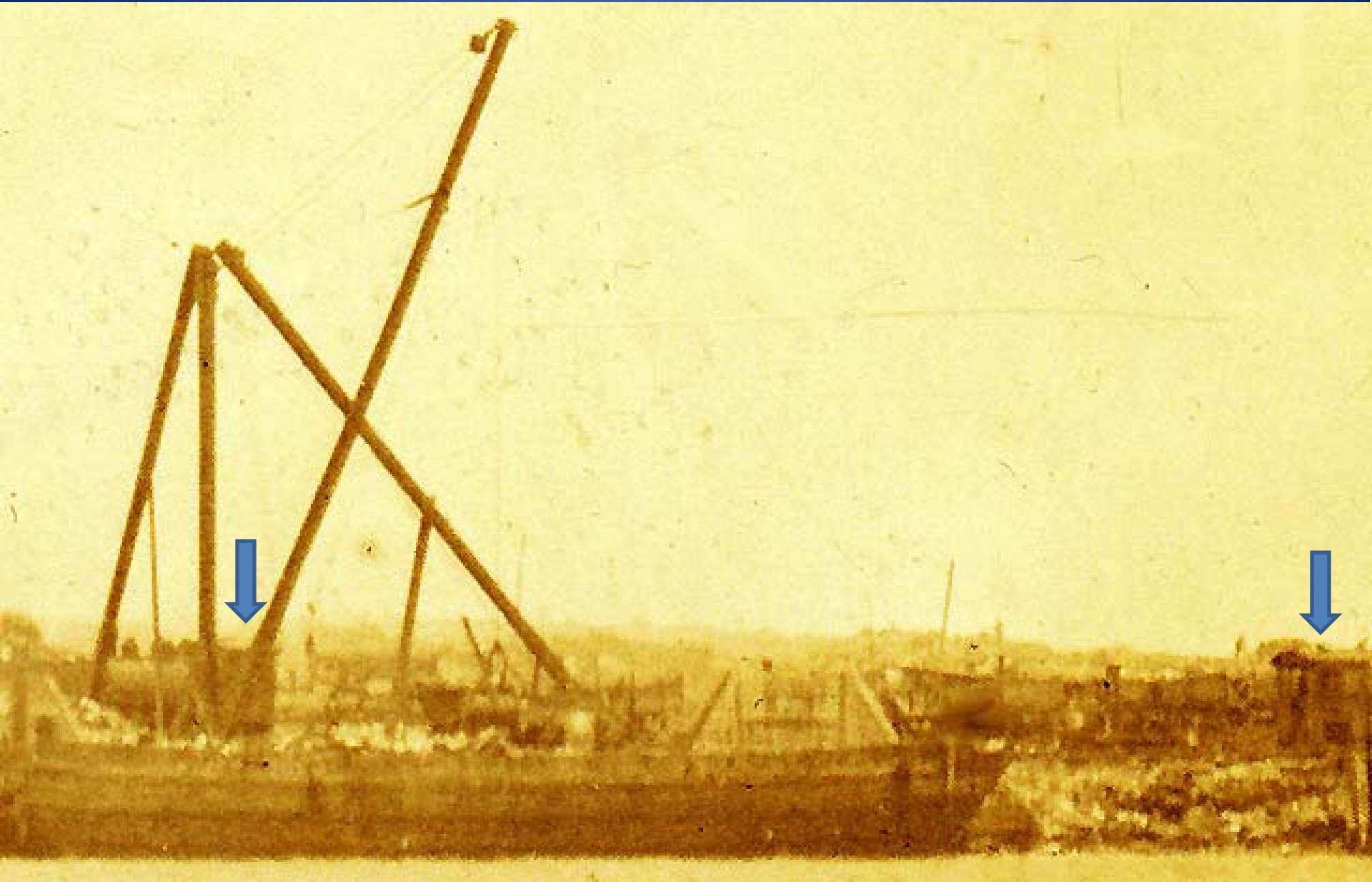
**Smoke comes from exhaust stack as huge clawed clam shovel moves solid waste fill. Note #3 on side of operator's compartment.**

# 1920s Scene #3: Close-up C (Center Section)



Beyond tug at landfill dock appears building with lettering reading 'Rodgers & Hagerty,' contractors involved Rikers development.

# 1920s Scene #3: Close-up D (Near Right Section)



**Note train engines, left and right above.**

# 1920s Scene #3: Close-up E (Far Right Section)



**Note train engine, left, and above-water part of shoal cribwork, right of center.**

# 1920s Rikers Landfill Scene #4: Overall View



**A small mountain of trash can be seen on far right in Scene 4 as can a string of above-water hardware for the shoal 'cribwork.'**

**Also visible in center is a huge clawed clam shovel in mid-air.**

**Visible on the far left is big plume of white steam from a tug boat.**

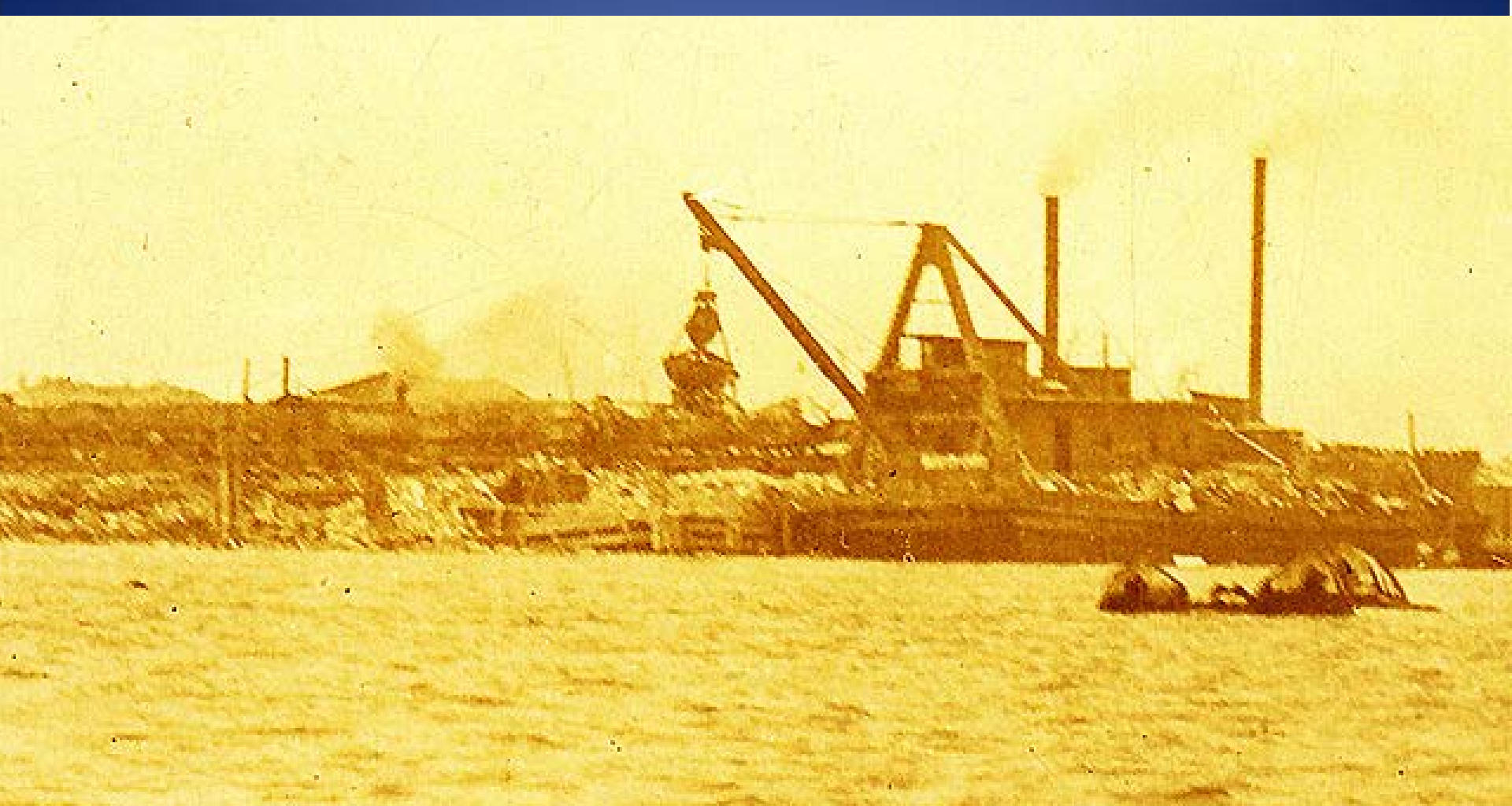
# 1920s Scene #4: Close-up A (Far Left Section)



A tug and a barge, most of its fill emptied, can be seen at the dock.



# 1920s Scene #4: Close-up B (Near Left Section)



The huge clawed-clam shovel can be seen opened over fill from a barge. Note also the above-water portion of cribwork.

# 1920s Scene #4: Close-up C (Near Right Section)



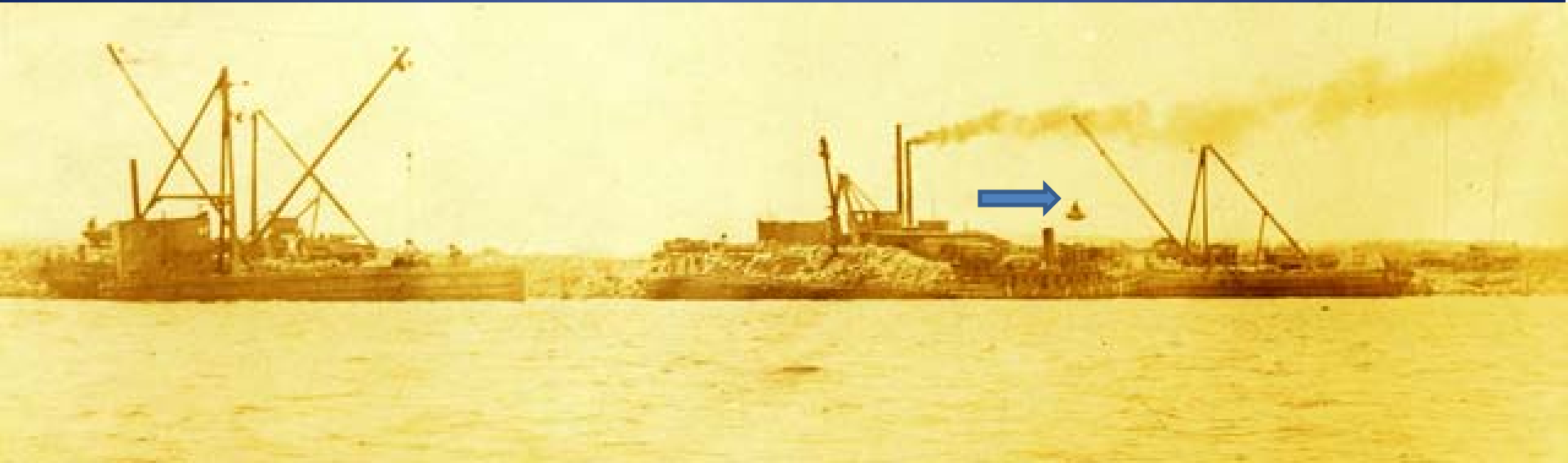
**Shacks of side-by-side barges visible. Note also above-water portion of shoal cribwork hardware.**

# 1920s Scene #4: Close-up C (Far Right Section)



**Perhaps the island's highest landfill mound.  
Note the above-water portions of shoal  
cribwork strung into the distance.**

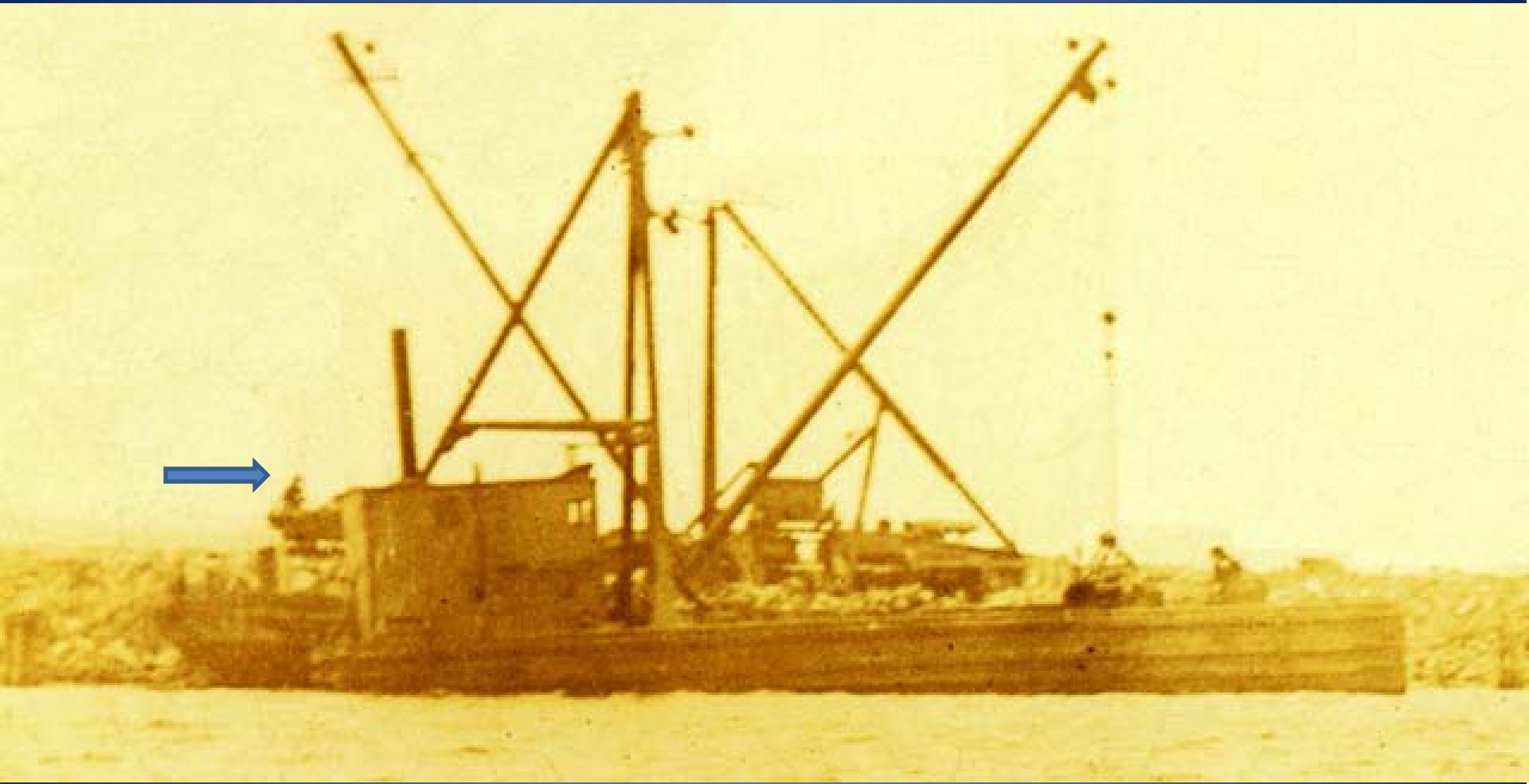
# 1920s Rikers Landfill Scene #5: Overall View



**Note clawed clam shovel in mid-air near a tug boat.**

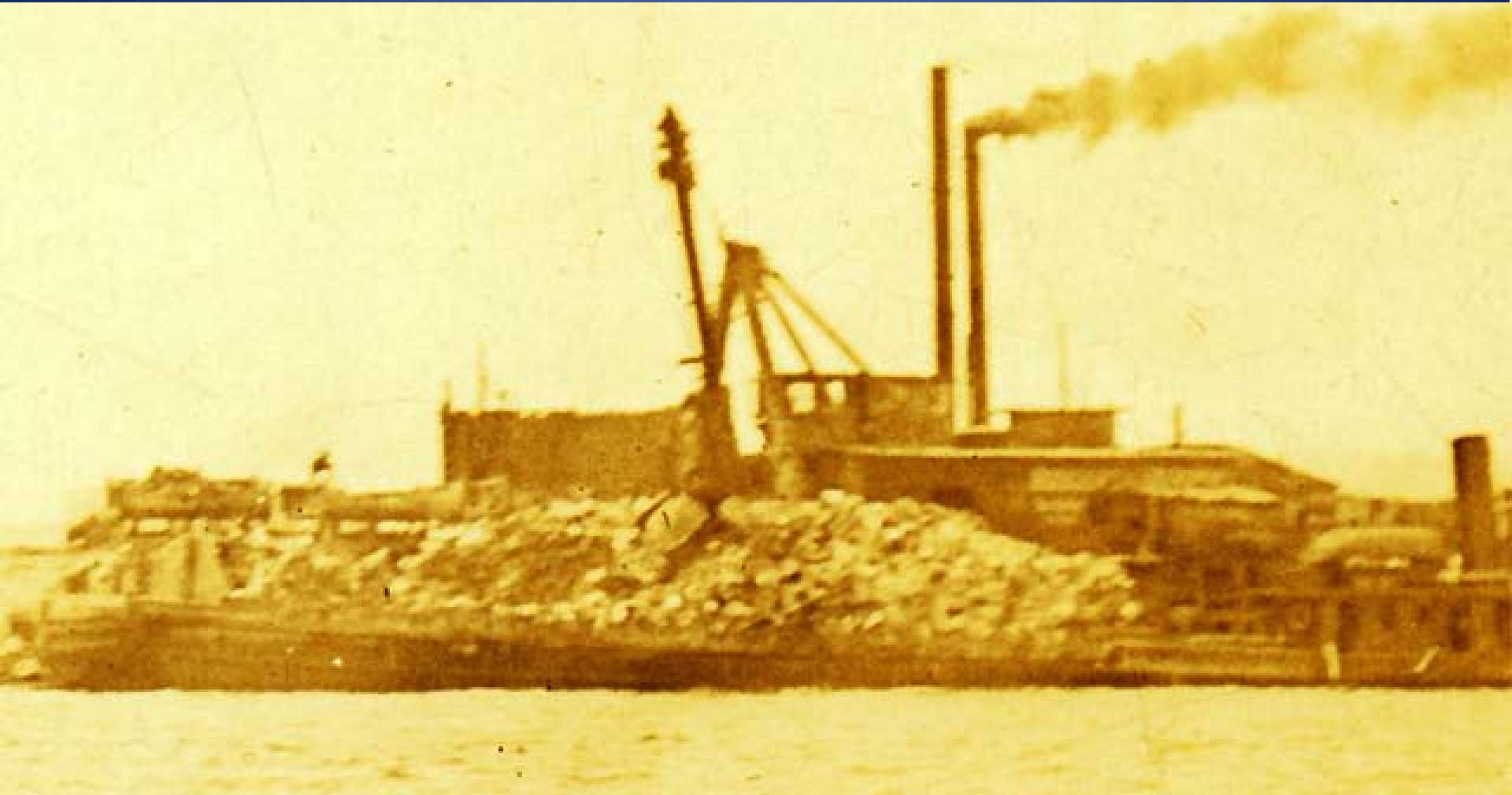
**Smoke spews from stack.**

# 1920s Scene #5: Close-up A (Left Section)



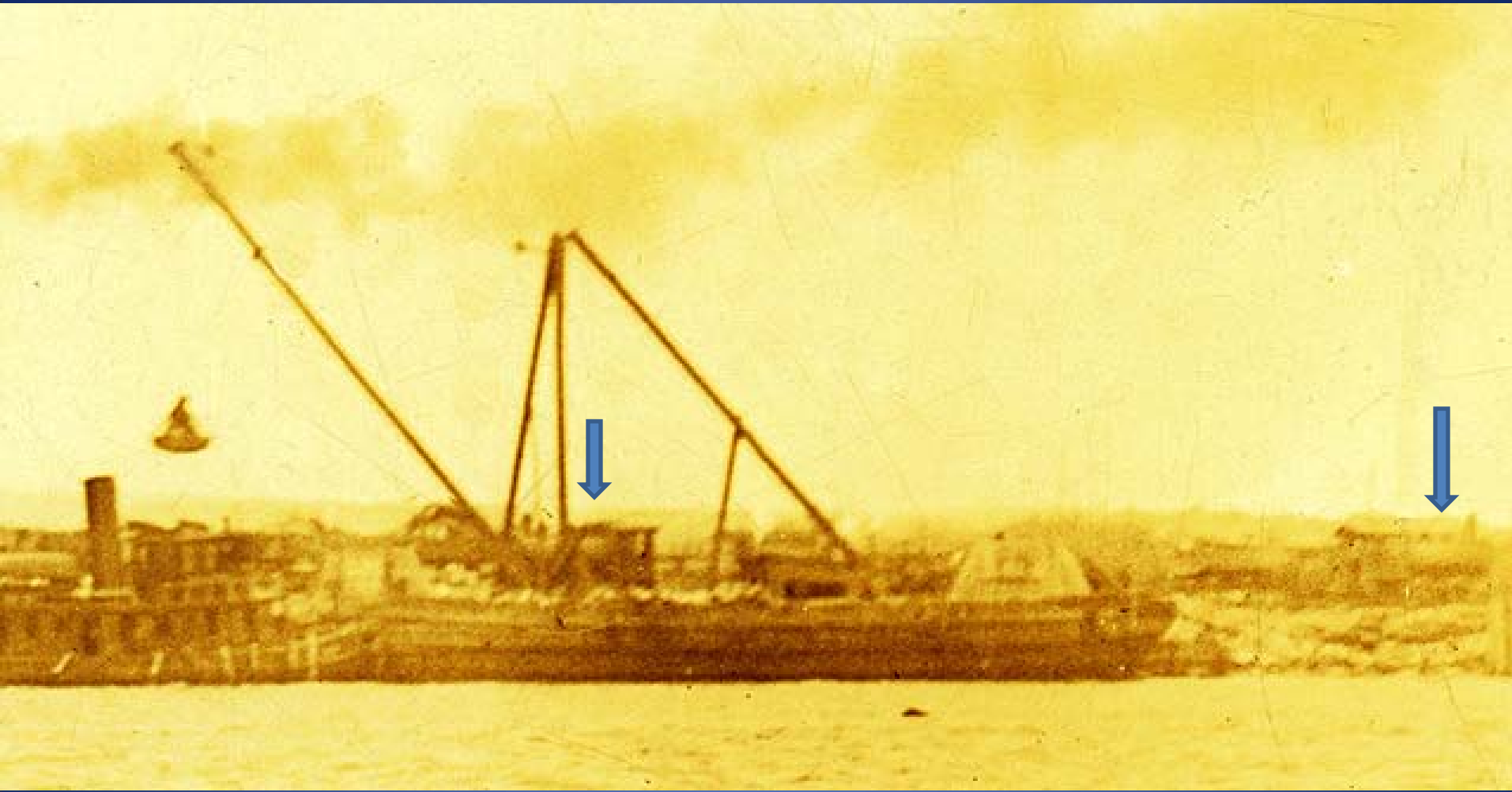
What may be a worker (but could be the top of a clawed clam shovel) can be seen above on the left side, standing in or at a rail car.

# 1920s Scene #5: Close-up B (Center Section)



**As smoke billows from a tall stack, a huge clawed-clam shovel works on barge fill. Note also part of a tug boat on right above.**

# 1920s Scene #5: Close-up C (Right Section)



**A train engine can be seen on the right. Another can be made out behind some of the lifting equipment just left of center.**

# 1920s Rikers Landfill Scene #6: Overall View



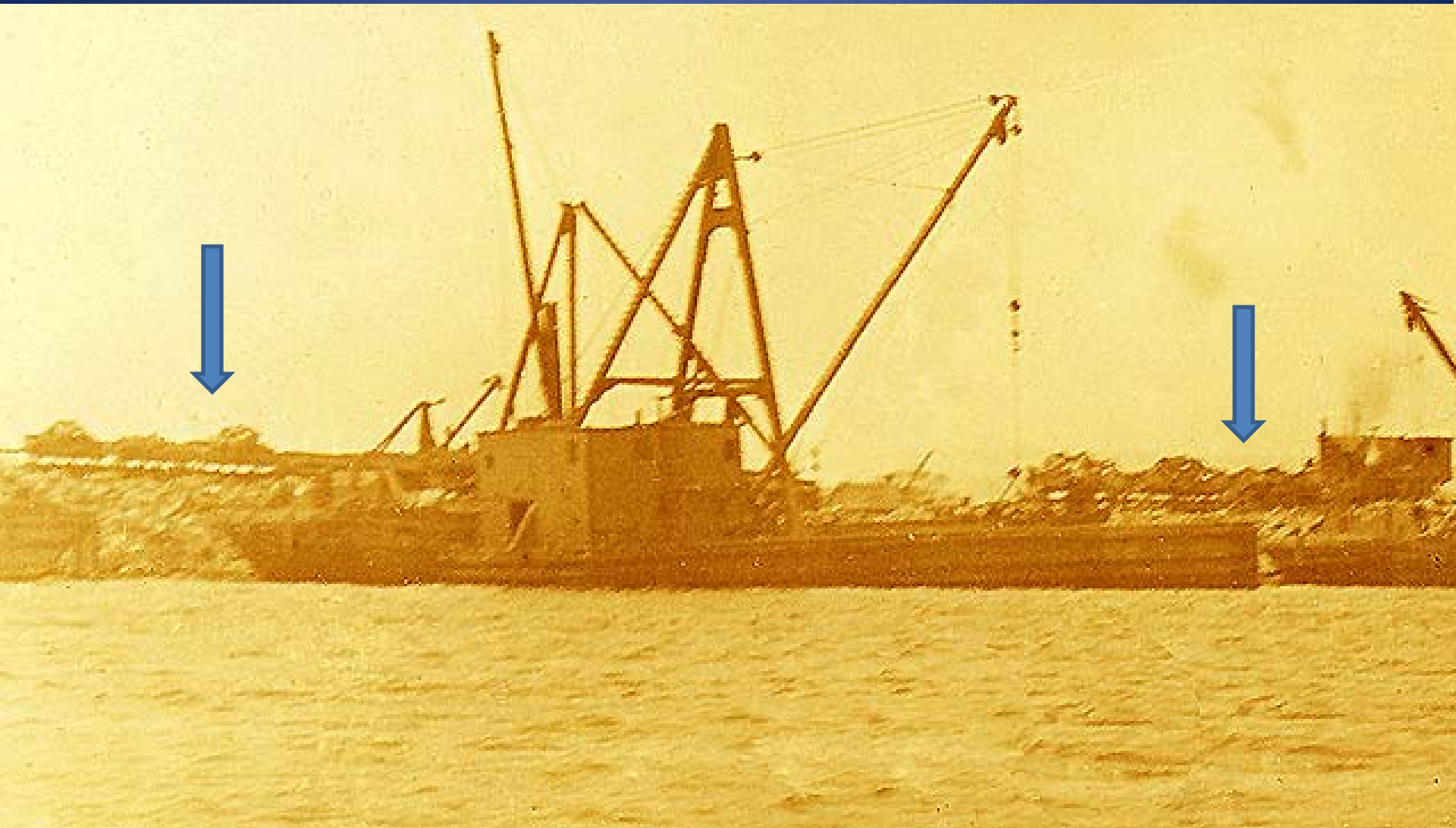
**Scene 6 is similar to Scene 3.**

**But it more clearly shows a work train left of center and does not show above-water shoal cribwork hardware.**

**Smoke and steam are more visible.**



# 1920s Scene #6: Close-up A (Far Left Section)



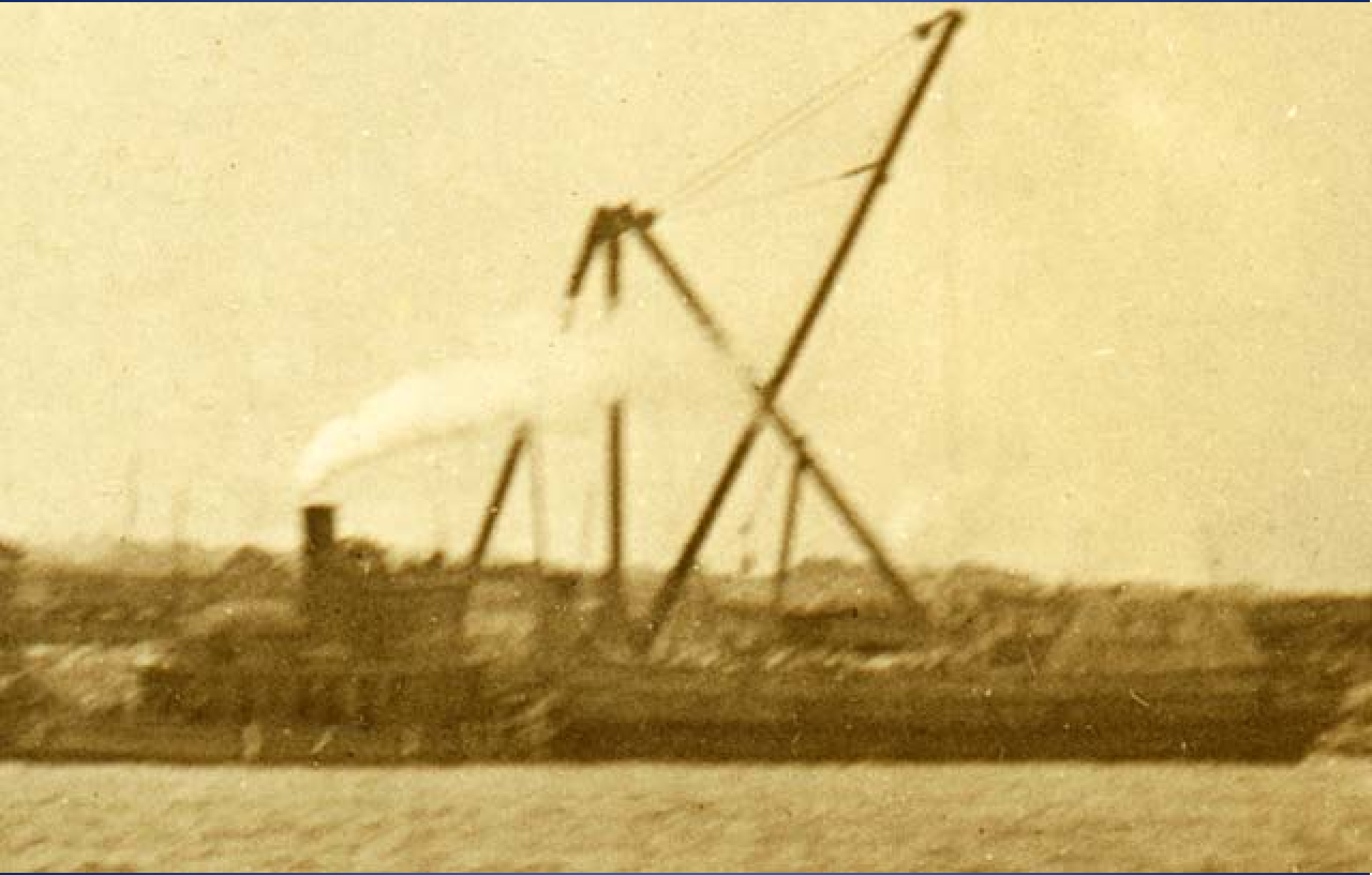
Rail cars loaded with fill can be seen on both the left and right sides above.

# 1920s Scene #6: Close-up B ( Near Left Section)



**A huge clawed-clam shovel works on barge.**

# 1920s Scene #6: Close-up C (Near Right Section)



**A white plume seen emanating from a tugboat.**

# 1920s Scene #6: Close-up D (Far Right Section)



Smoke and more smoke fill far right close-up.

# 1920s Rikers Landfill Scene #7: Overall View



Several barges with various load levels.

Written on the back of the photo:

*Showing -- 19 Loader scows*

*2 Light "*

*At diggers #3 & 4 –*

*Rikers Island, July 14, 1921.*

# 1920s Scene #7: Close-up A (Far Left Section)



Fill-loaded rail cars, with the engine that pushes them, can be seen on the left. What appears two men in the boat bow is just one man checking his longjohns on a clothesline.

# 1920s Scene #7: Close-up A (Longjohns detail)



Man in boat checks longjohns on clothesline.

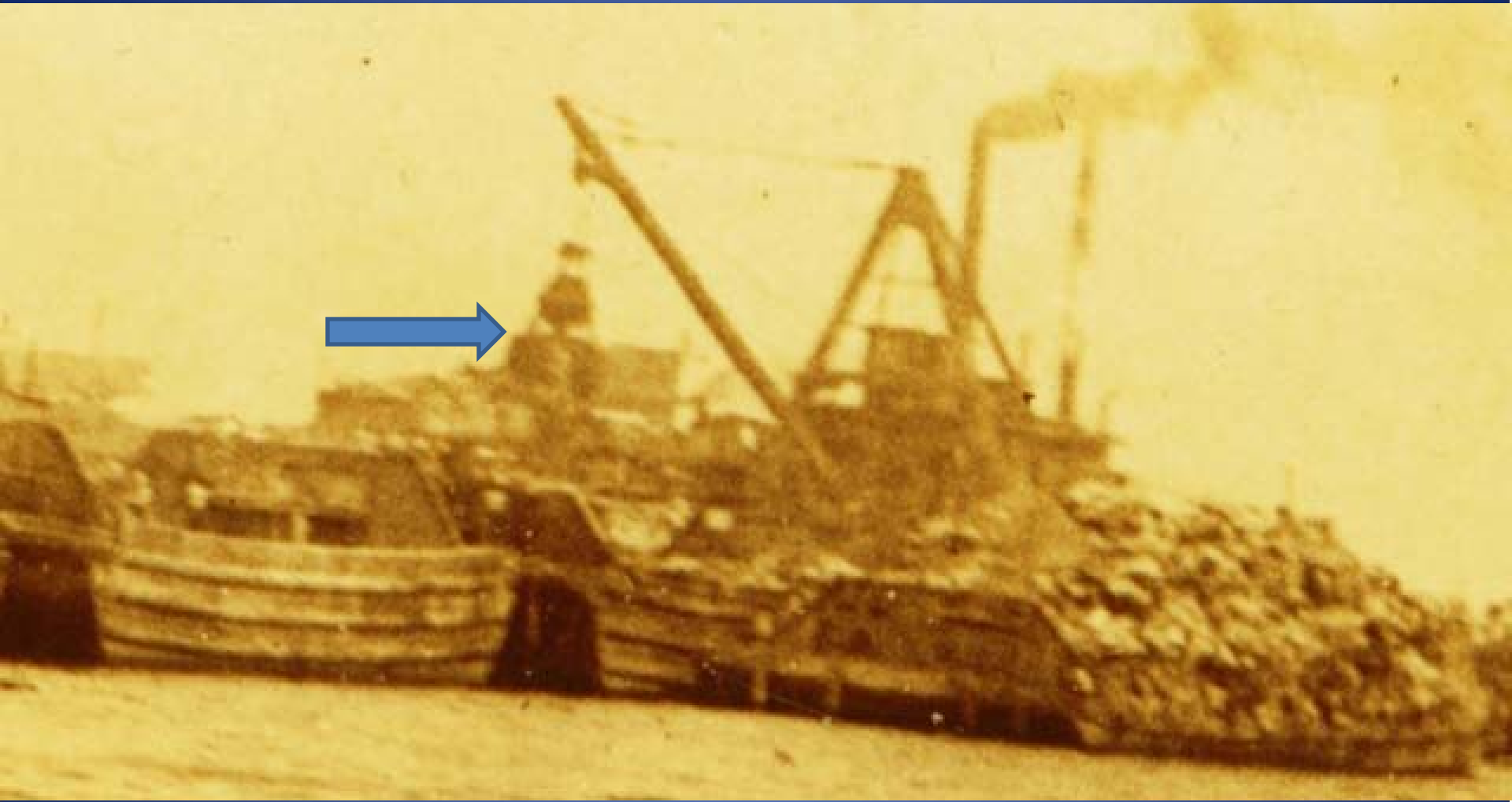
# 1920s Scene #7: Close-up B (Near Left Section)



Two men are visible at opposite ends of the barge. On extreme left, a 3rd man stands atop fill with sky as backdrop.



# 1920s Scene #7: Close-up C (Near Right Section)



Having deposited fill into rail cars, an open clawed-claim shovel can be seen in mid-air between the train and the barge.

# 1920s Scene #7: Close-up D (Far Right Section)



**Filled with solid waste  
nearly to over-flowing  
are barges waiting to be unloaded.**

# 1920s Rikers Landfill Scene #8: Overall View

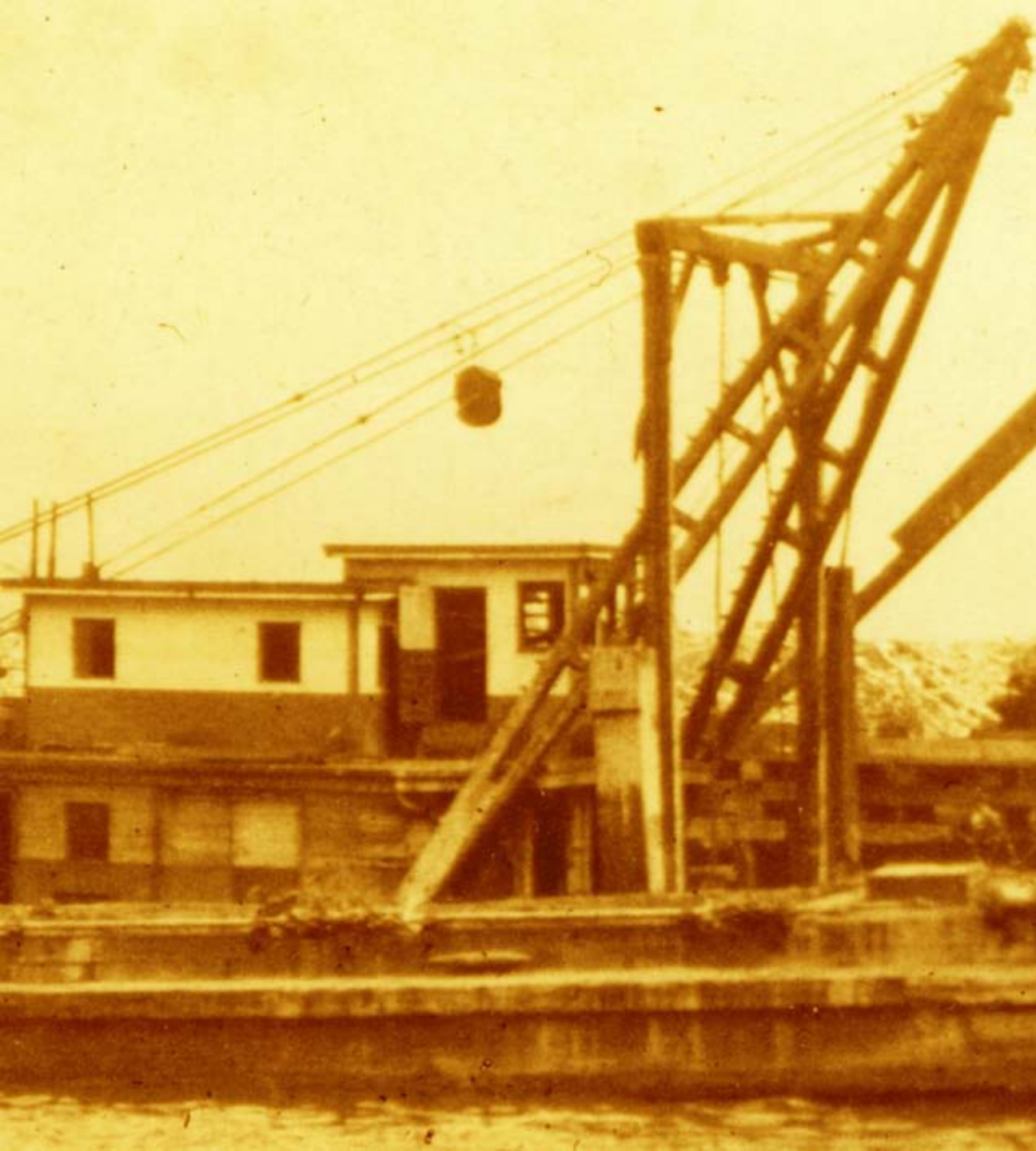


Hand written on back of the photo: "Fradius Contracting Co., Dredge 'Phoenix,' Rikers Island, 'Off-Shore' July 14, 1921." A company with that name figured as a victim in a 1920 story about alleged building trades shake-downs. In 1921, it again figured as victim, this time in a dispute with the Street Cleaning Dept. involving Rikers Island ash removals.



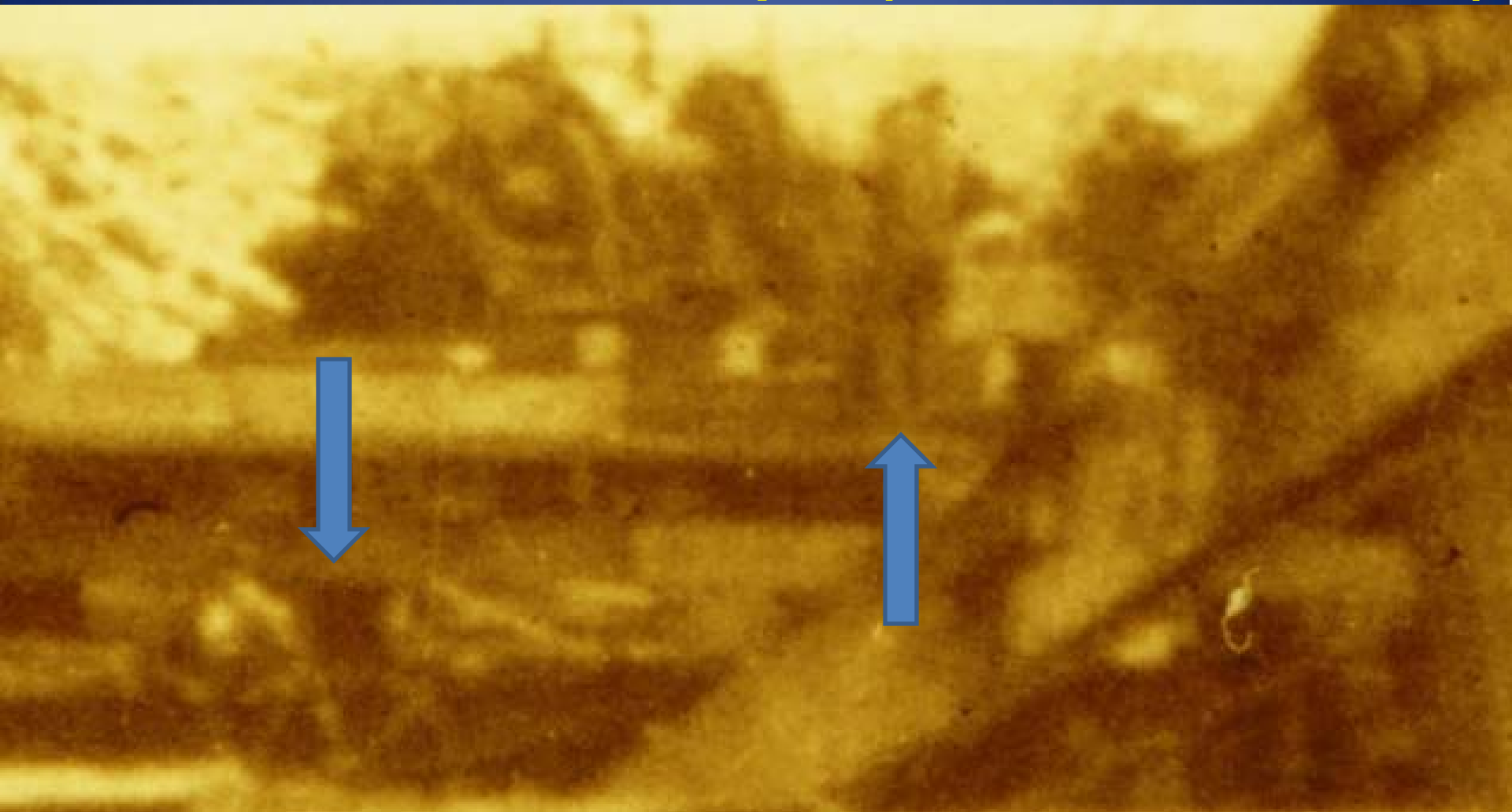
## **1920s Scene #8: Close-up A (Far Left Section)**

**One of the rail  
cars loaded  
with fill can be  
seen in the  
background,  
seemingly  
"framed" by two  
smoke stacks in  
the foreground.**



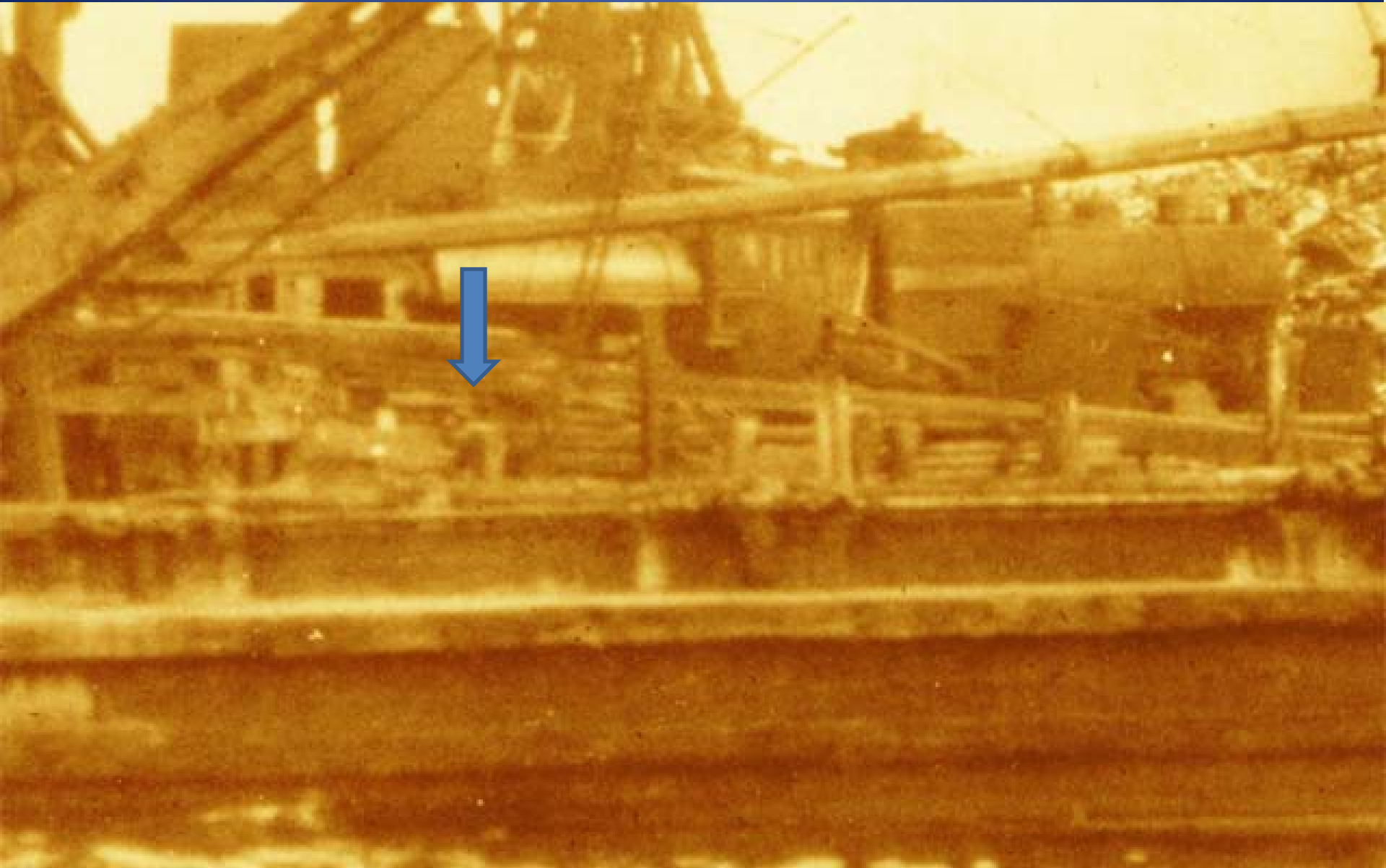
**1920s Scene  
#8: Close-up  
B (Near Left  
Section)  
Can anyone  
identify the  
object  
seemingly  
suspended in  
air on one of  
the cables? It  
does not  
appear a  
photo defect.**

# 1920s Scene #8: Close-up C (Left Center Section)

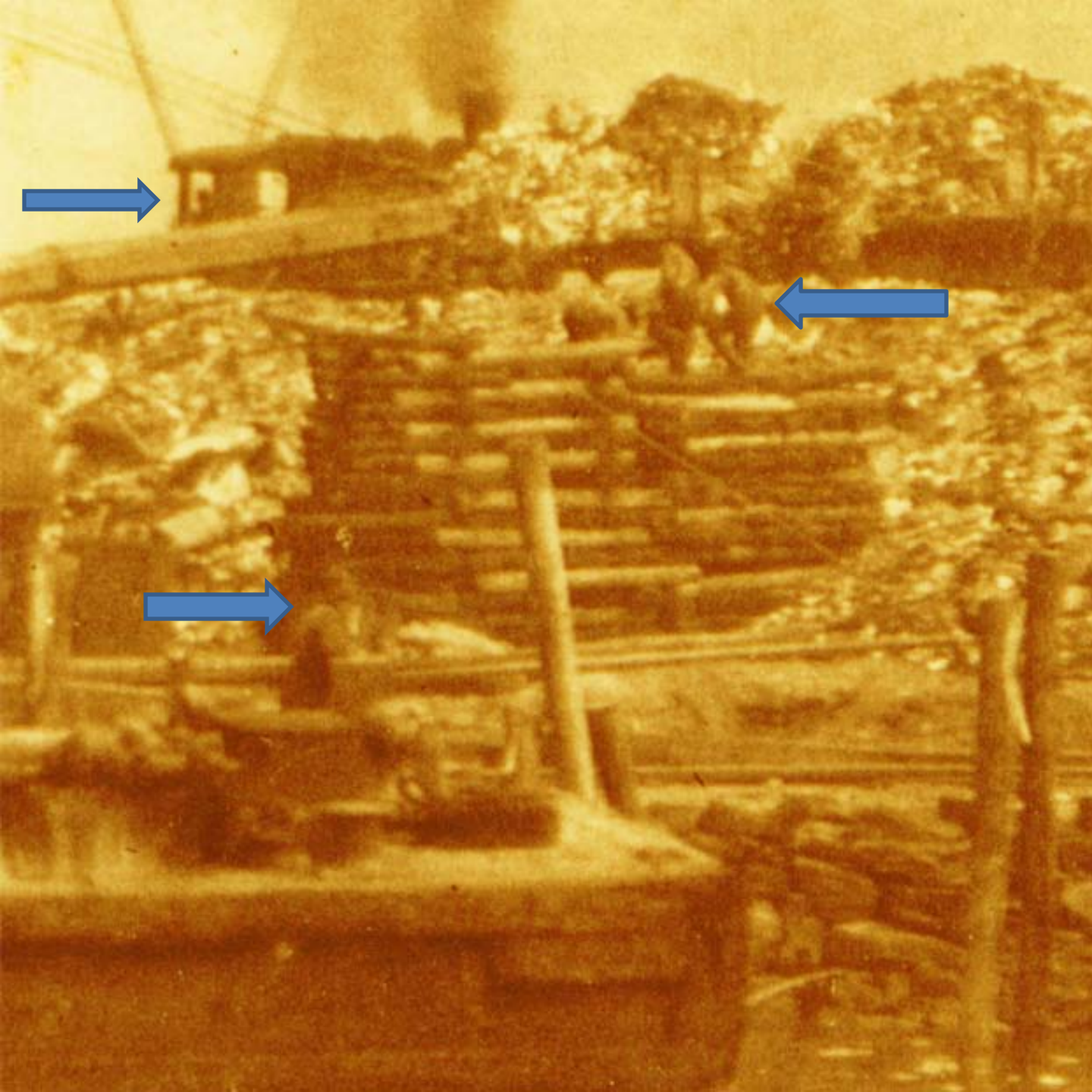


In lower part of close-up, 2 men near a wheel seem to be pulling a cable onto it while above them a man appears working on machinery.

# 1920s Scene #8: Close-up D (Right Center Section)



Next to lowered load of timber is that a man?



**1920s**  
**Scene #8:**  
**Close-up E**  
**(Near Right**  
**Section)**

**Below fill**  
**train, men**  
**work on**  
**timbers**  
**as man on**  
**boat**  
**watches.**



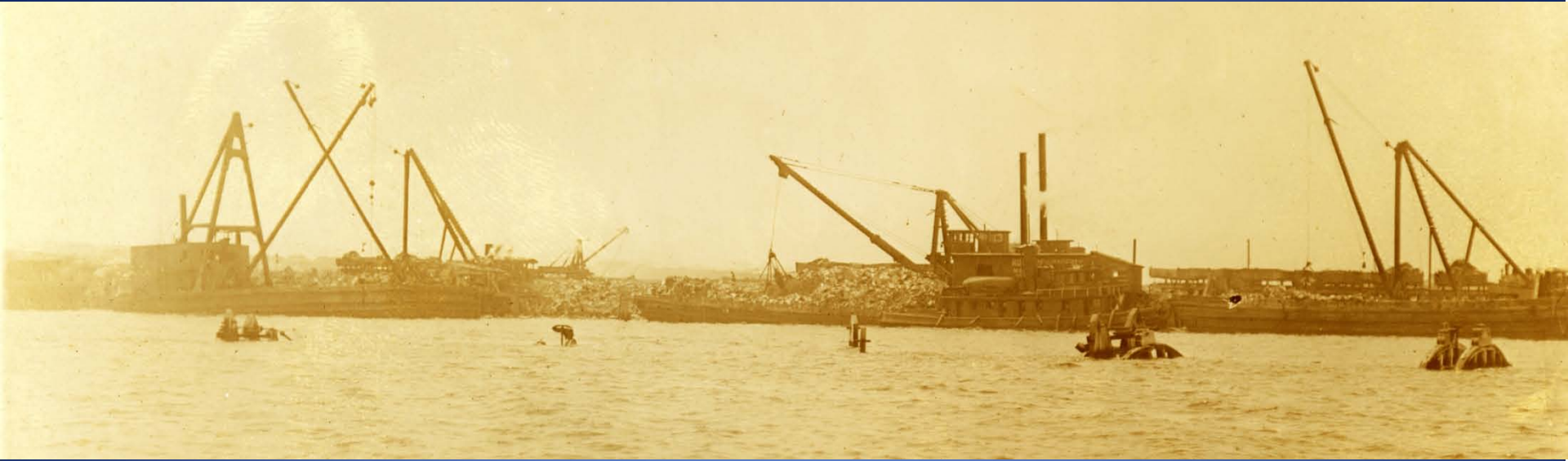


**1920s Scene  
#8: Close-up F  
(Far Right  
Section)**

**A man in  
white shirt  
(supervisor?)  
watches  
timber crew  
in prior slide.**

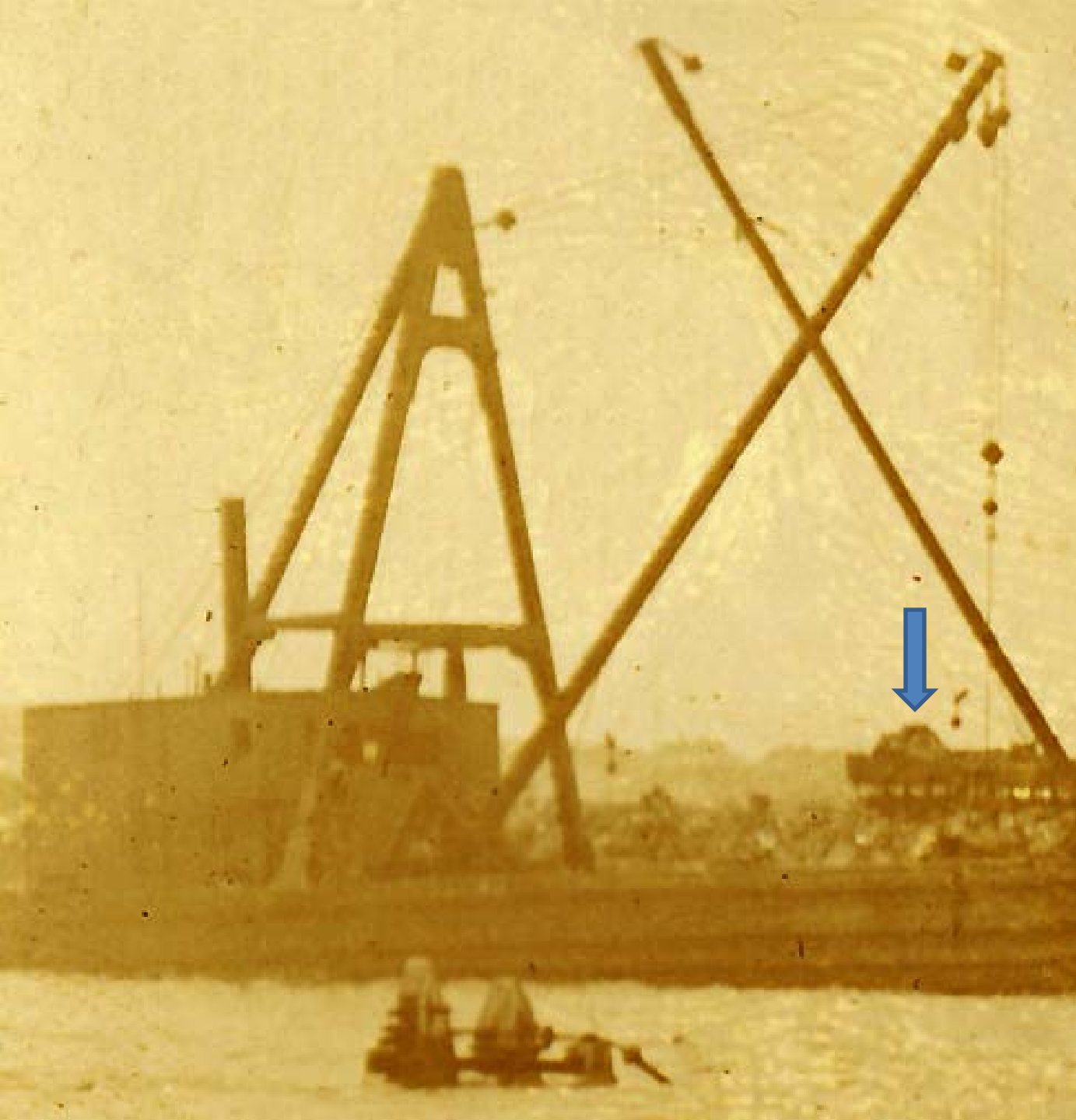
**Note  
weathervane  
on shack  
roof.**

# 1920s Rikers Landfill Scene #9: Overall View



Hand written on back of the photo: *'Digger #3 and Clean-up diggers at Rikers Island July 19th, 1921.'*

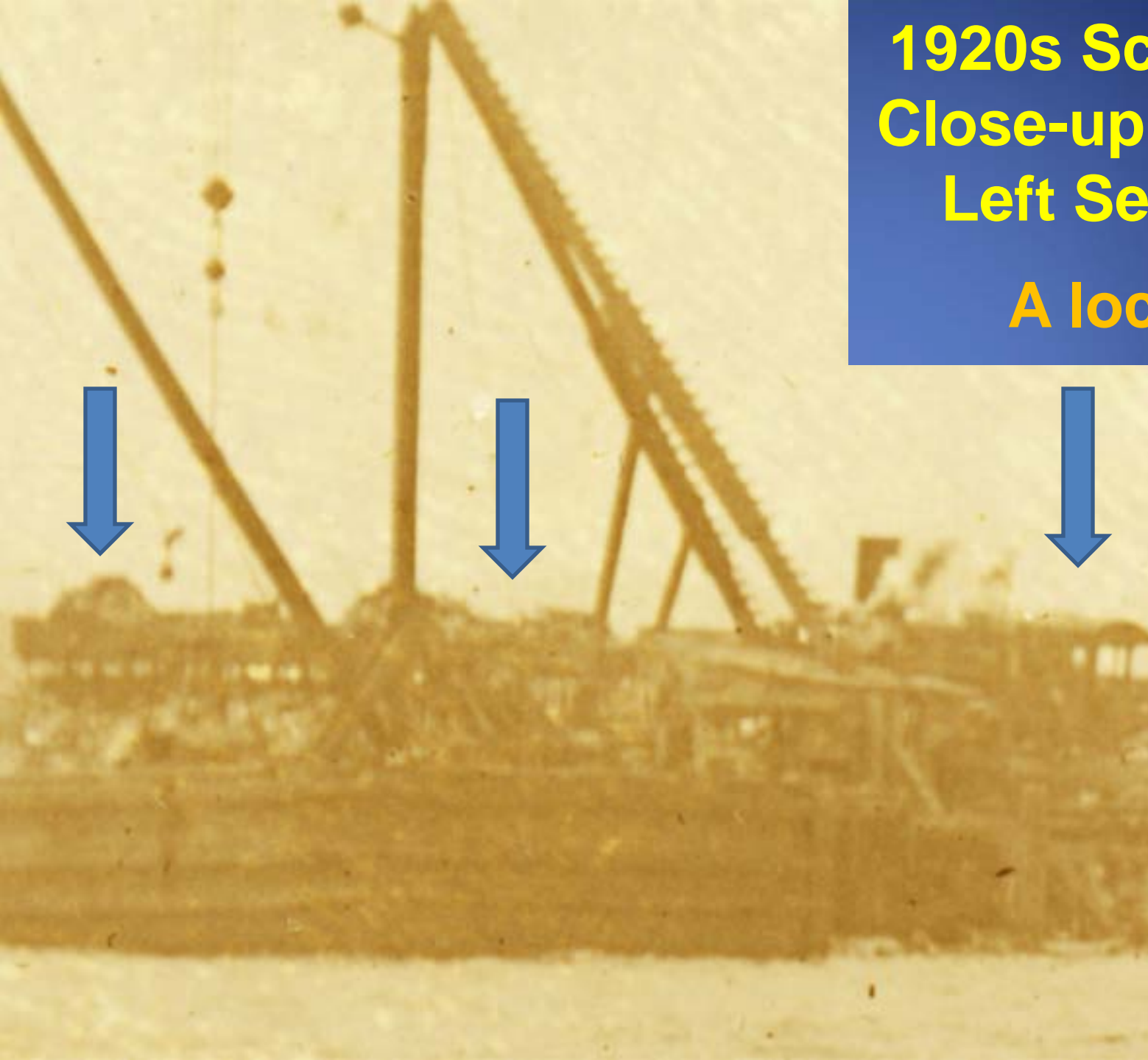
The landfill view above is similar to that in Scenes 3 & 6 but with above-water cribwork hardware more visible than in those scenes.



**1920s**  
**Scene #9:**  
**Close-up A**  
**(Far Left**  
**Section)**  
**Rail cars**  
**loaded with**  
**fill seen on**  
**right side.**  
**Note**  
**above-**  
**water**  
**cribwork**  
**hardware.**

**1920s Scene #9:  
Close-up B (Near  
Left Section)**

**A locomotive  
and its  
rail  
cars  
loaded  
with fill  
can be  
seen in  
back-  
ground.**

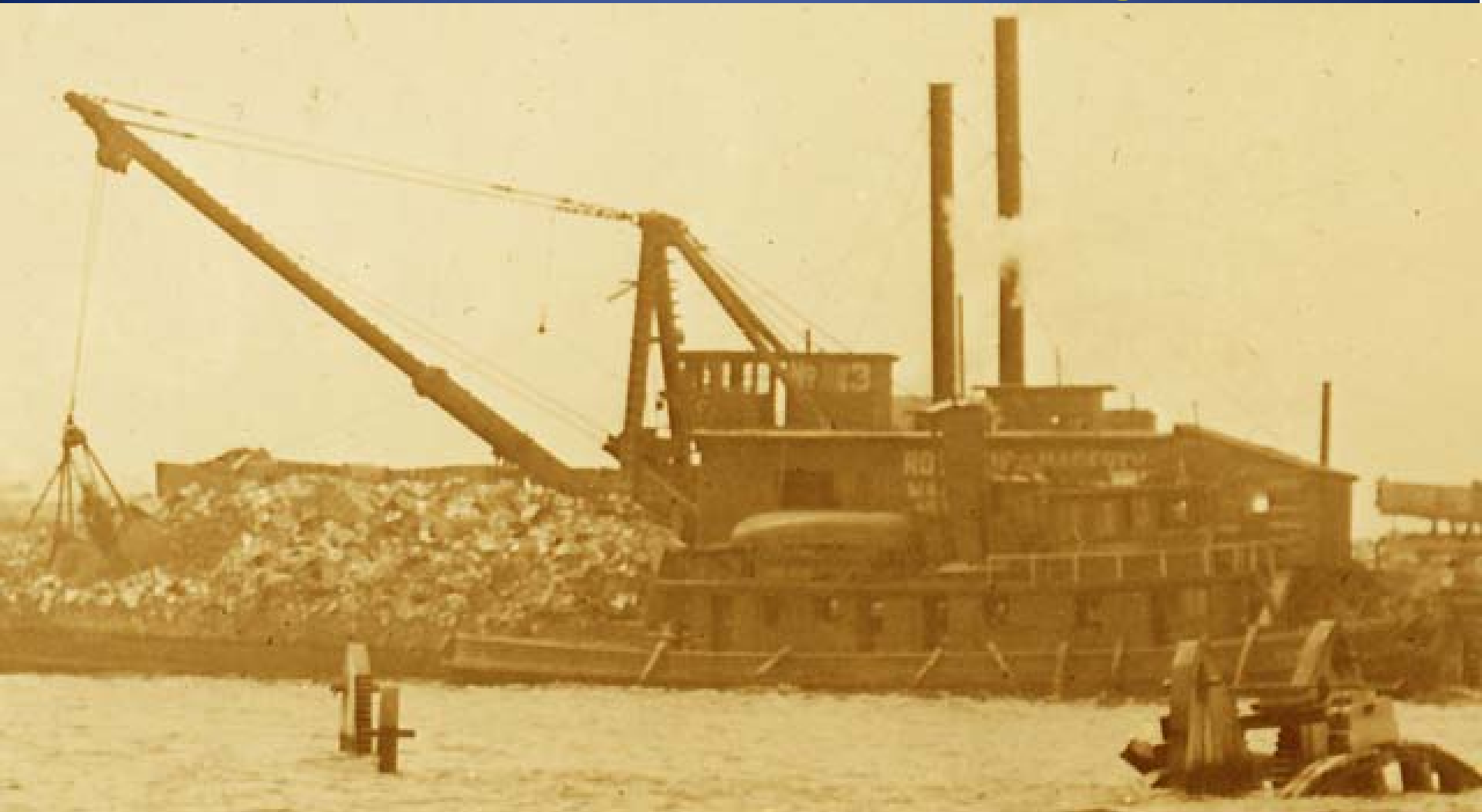


# 1920s Scene #9: Close-up C (Center Section)



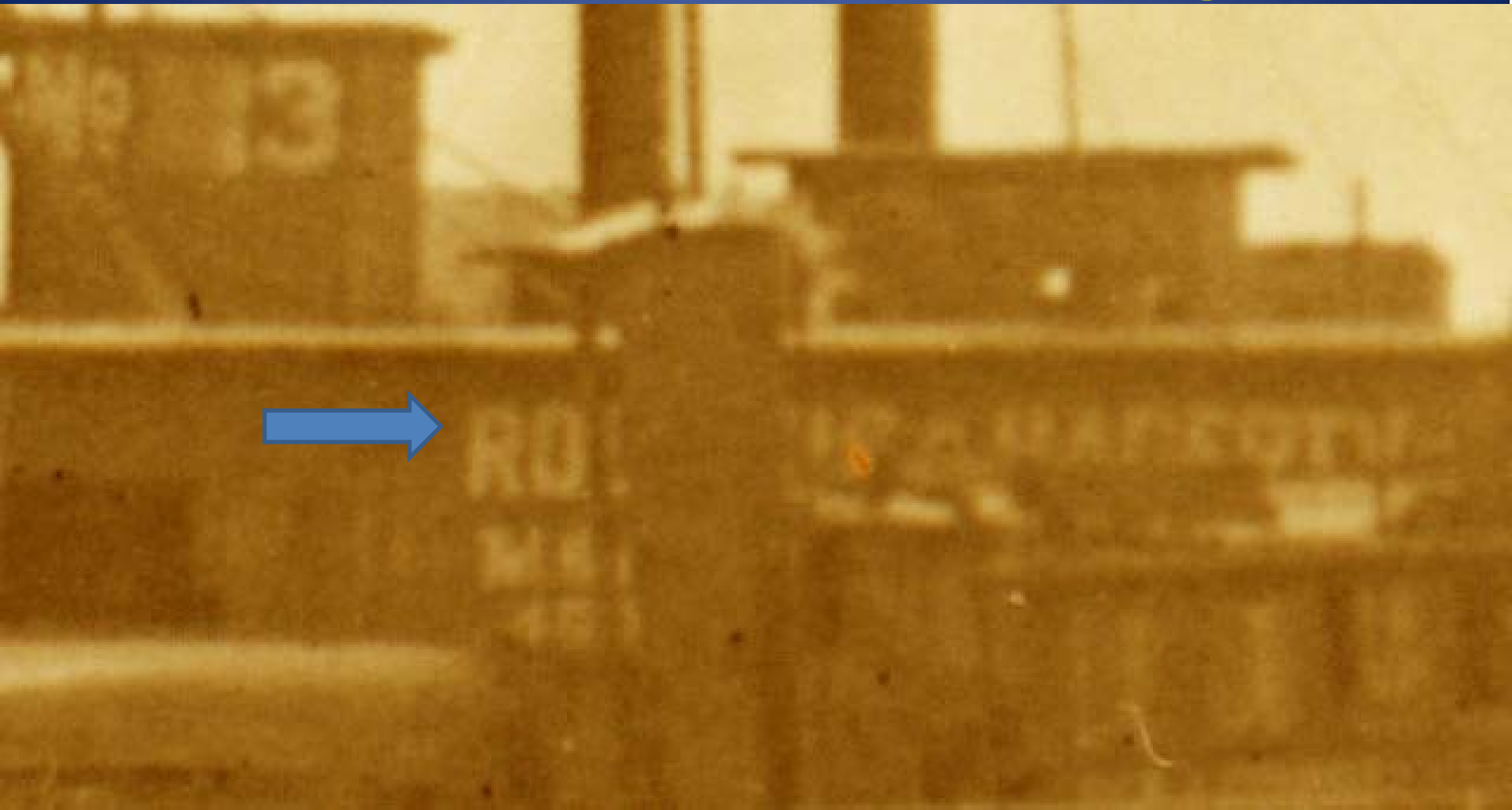
**A wheel appears part of the above-water hardware of the cribwork. A man appears to be walking atop hill of fill on the right.**

# 1920s Scene #9: Close-up D (Near Right Section)



**Clawed clam shovel works on barge trash. Note above-water hardware of shoal cribwork.**

# 1920s Scene #9: Close-up E (Lettering Detail)



Lettering on the big building consistent with name 'Rodgers & Hagerty,' a contracting firm much connected to Rikers Island development.

# 1920s Scene #9: Close-up F (Far Right Section)



**Above-water cribwork and landfill work train.**



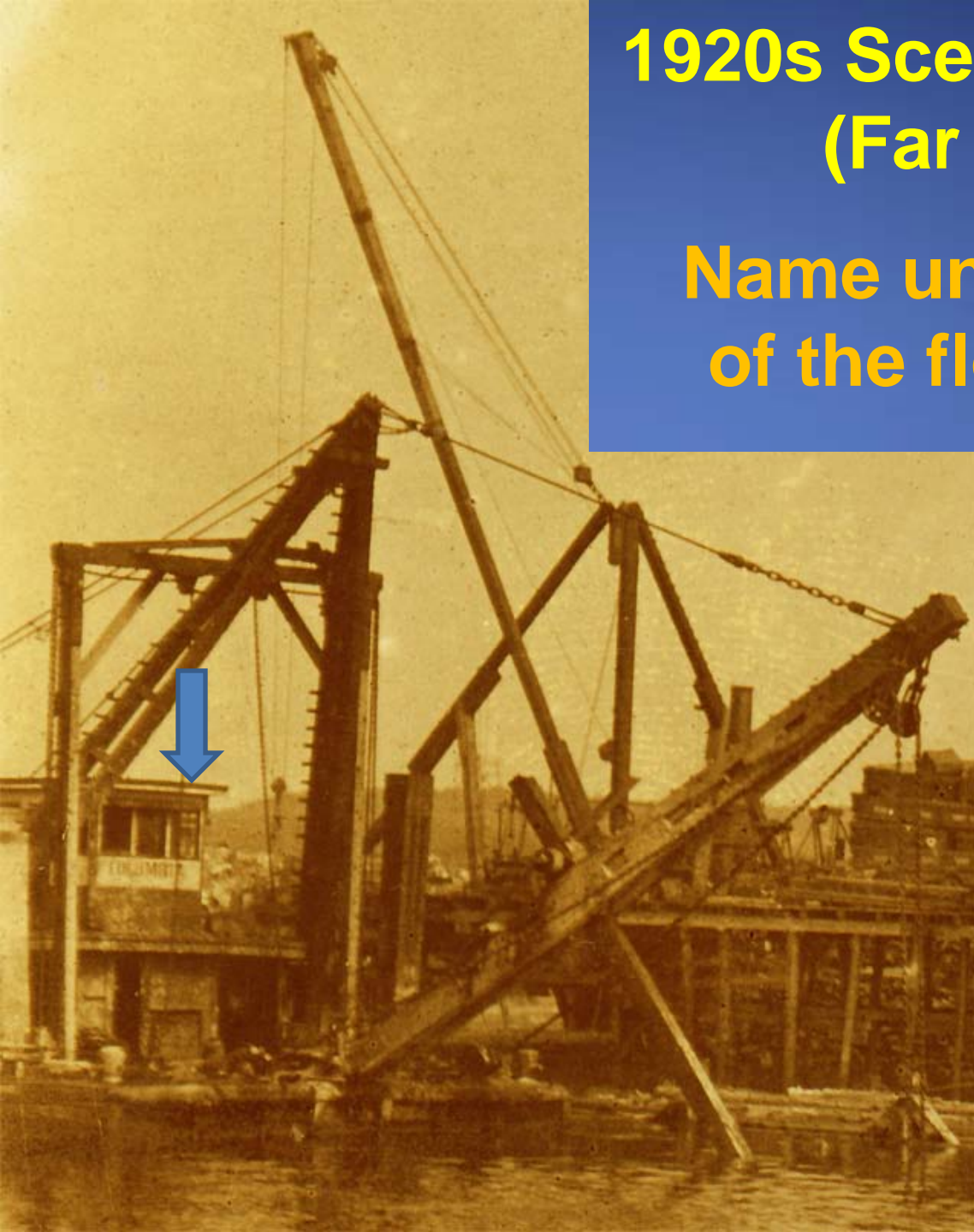
# 1920s Rikers Landfill Scene #10: Overall View



Floating equipment at work near the waters' edge and men at work on a pier-like structure as a man on the top of the trash hill appears observing the operations.

# 1920s Scene #10: Close-up A (Far Left Section)

Name under top 3 windows  
of the floating digger rig is  
'Columbia.'



The same rig  
seen from behind  
appears in  
upcoming Scene  
#11: Close-up D  
(Far Right  
Section)



**1920s**

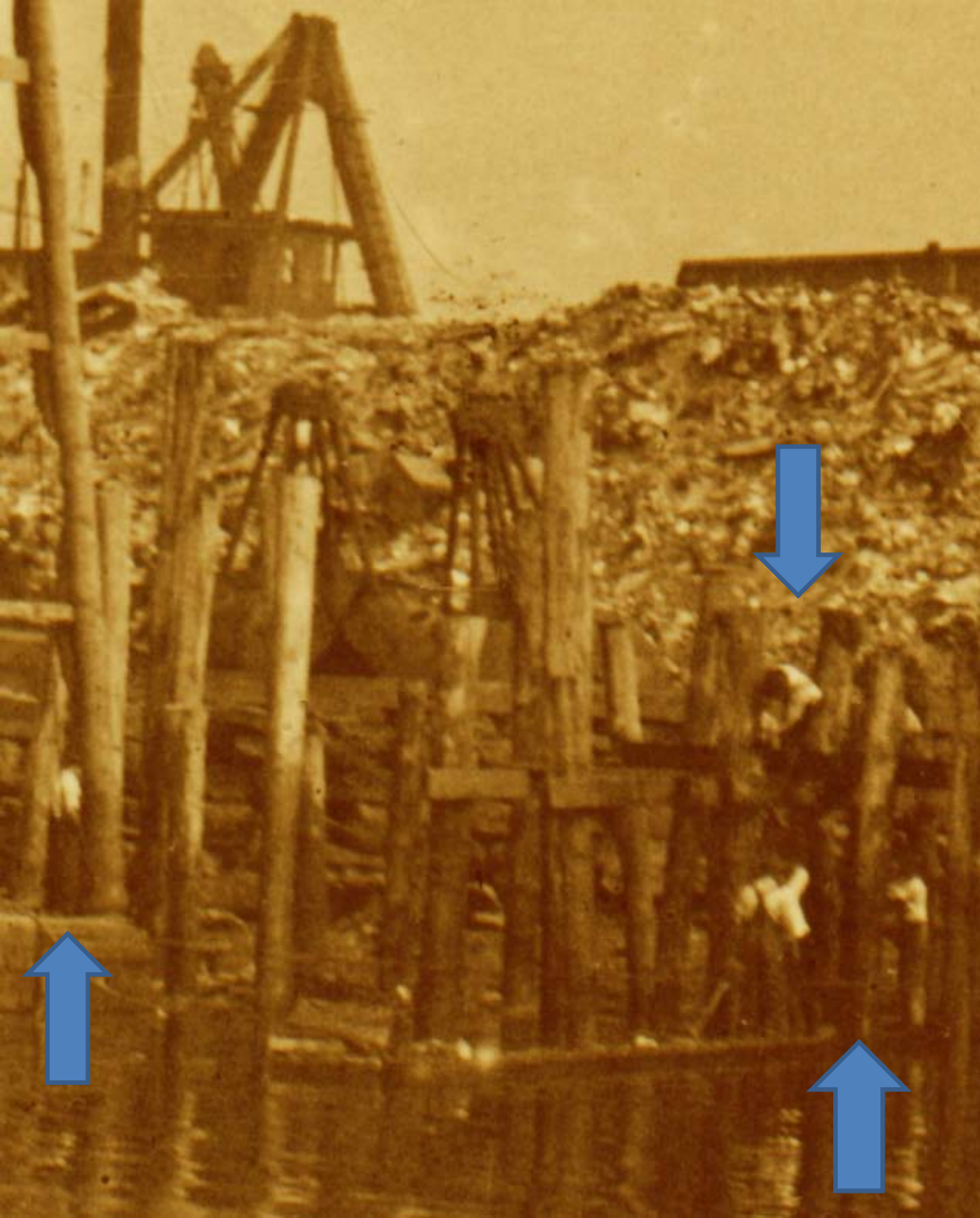
**Scene #10:  
Close-up B  
(Near Left  
Section)**

**Address and  
name on the  
floating rig's  
cabin:**

***Phoenix  
Construction  
Company, 41  
Park Row.***

**1920s Scene  
#10: Close-up C  
(Left Center  
Section)**

**Five men seen  
building pier.  
Visible on the left  
is a 6th man – on  
rig, hands in his  
pockets --  
watching the  
project in  
progress.**





**1920s Scene  
#10: Close-up  
D (Right Center  
Section)**

**Two more men  
work on pier as  
a man atop the  
trash hill  
watches. Note  
the weather-  
vane on the  
stack roof.**



## 1920s Scene #10: Close-up E (Near Right Section)

A few more men  
working -- and one  
more observing --  
on that pier seen in  
the previous close-  
ups.



**1920s  
Scene #10:  
Close-up F  
(Far Right  
Section)**

**Some of the  
debris that  
constitutes  
the  
shoreline  
fill hill.**

# 1920s Rikers Landfill Scene #11: Overall View



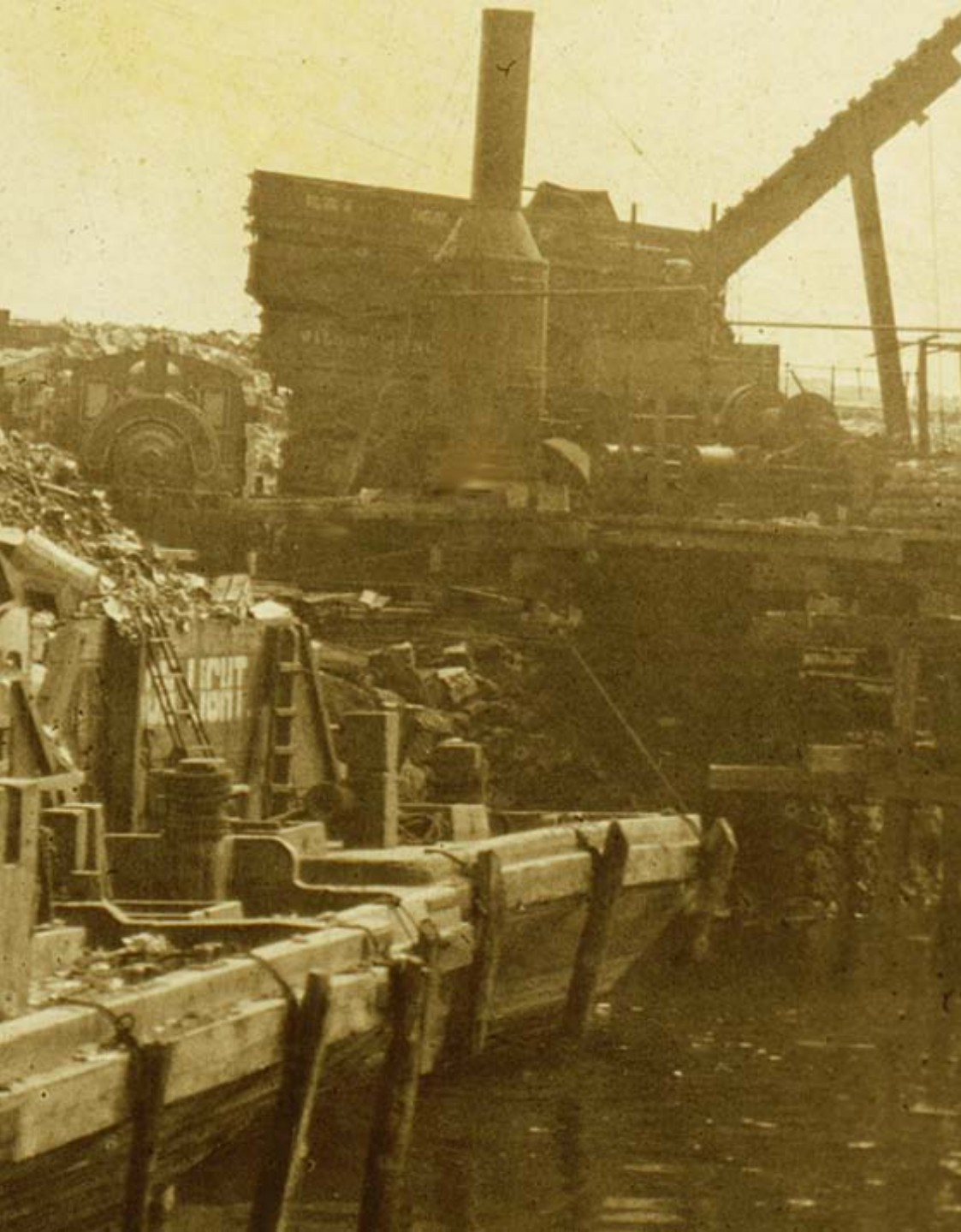
**'Columbia' & Pheonix rigs from different angle.**





## **1920s Scene #11: Close-up A (Far Left Section)**

**A good glimpse at  
some of the  
landfill's basic  
ingredients --  
bedding, container  
drums, barrels,  
crates, boxes, etc.**



## **1920s Scene #11: Close-up B (Near Left Section)**

**Empty rail cars  
stacked. Name  
'Wilson' on side  
of one. Other  
partial letters  
consistent with  
name 'English.'  
Wilson & English  
Construction Co.  
was based at 50  
Church Street.**

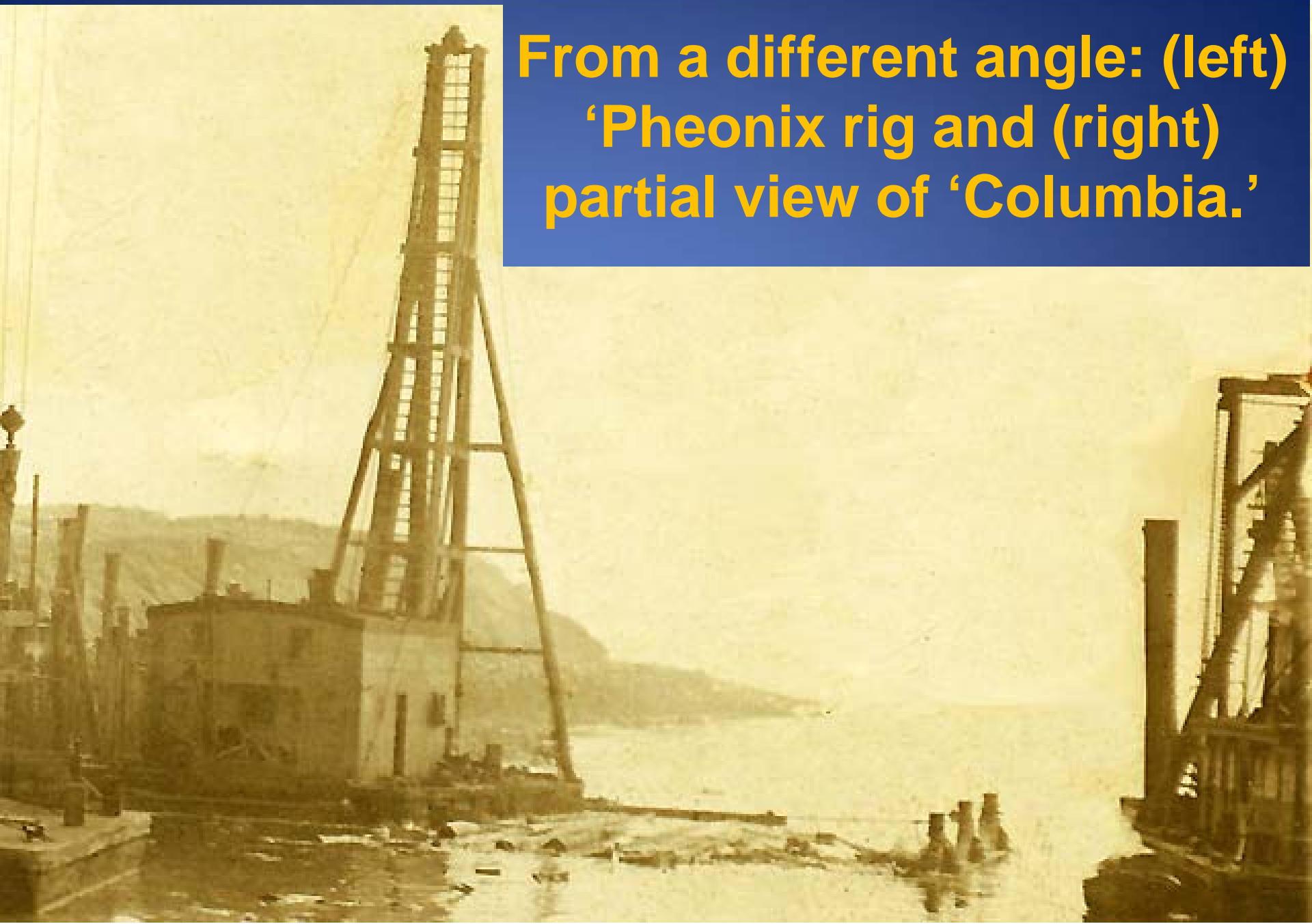


## 1920s Scene #11: Close-up C (Near Right Section)

Paving stones or  
rough cement  
blocks appear  
neatly stacked on a  
loading wharf.

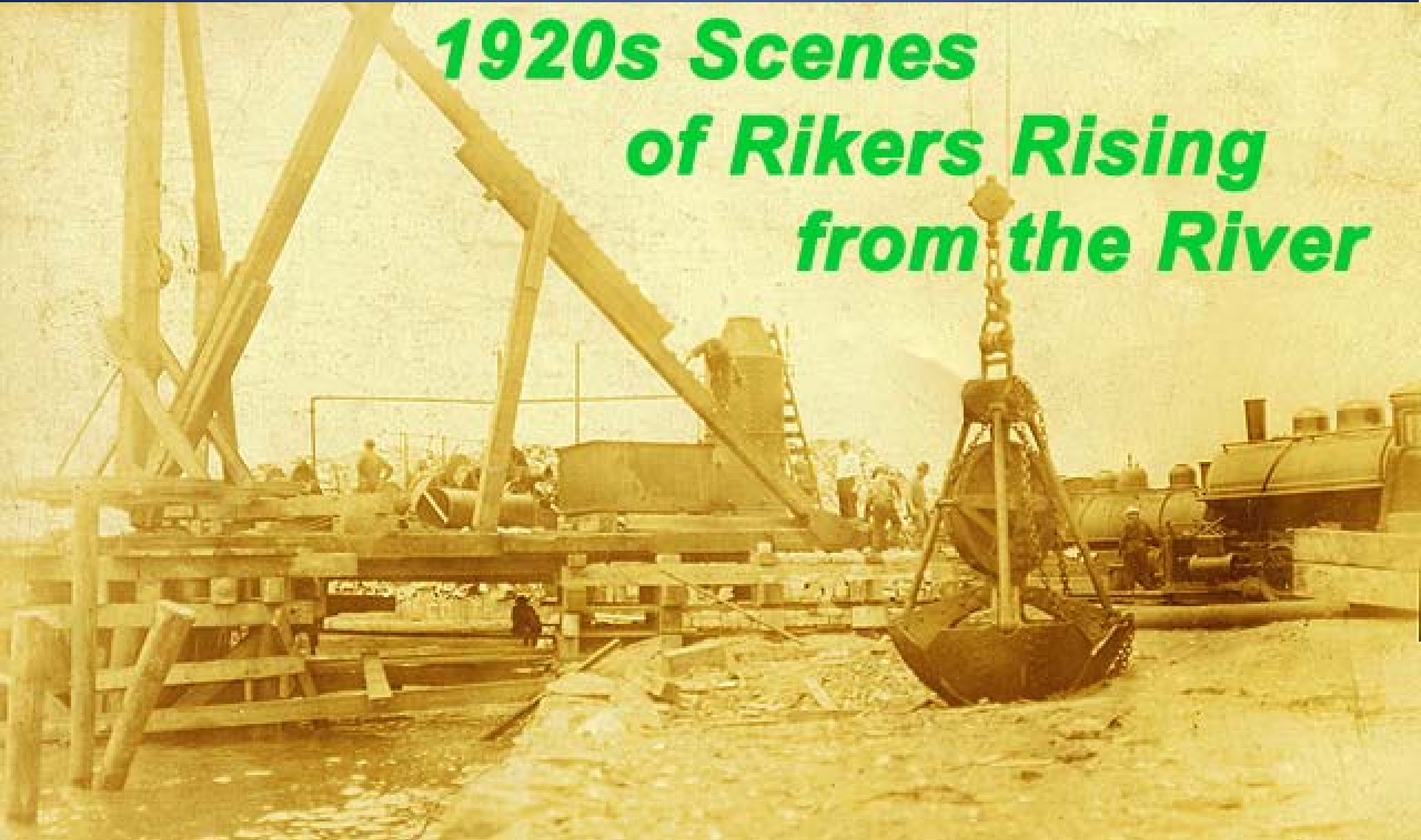
# 1920s Scene #11: Close-up F (Far Right Section)

From a different angle: (left)  
'Pheonix rig and (right)  
partial view of 'Columbia.'

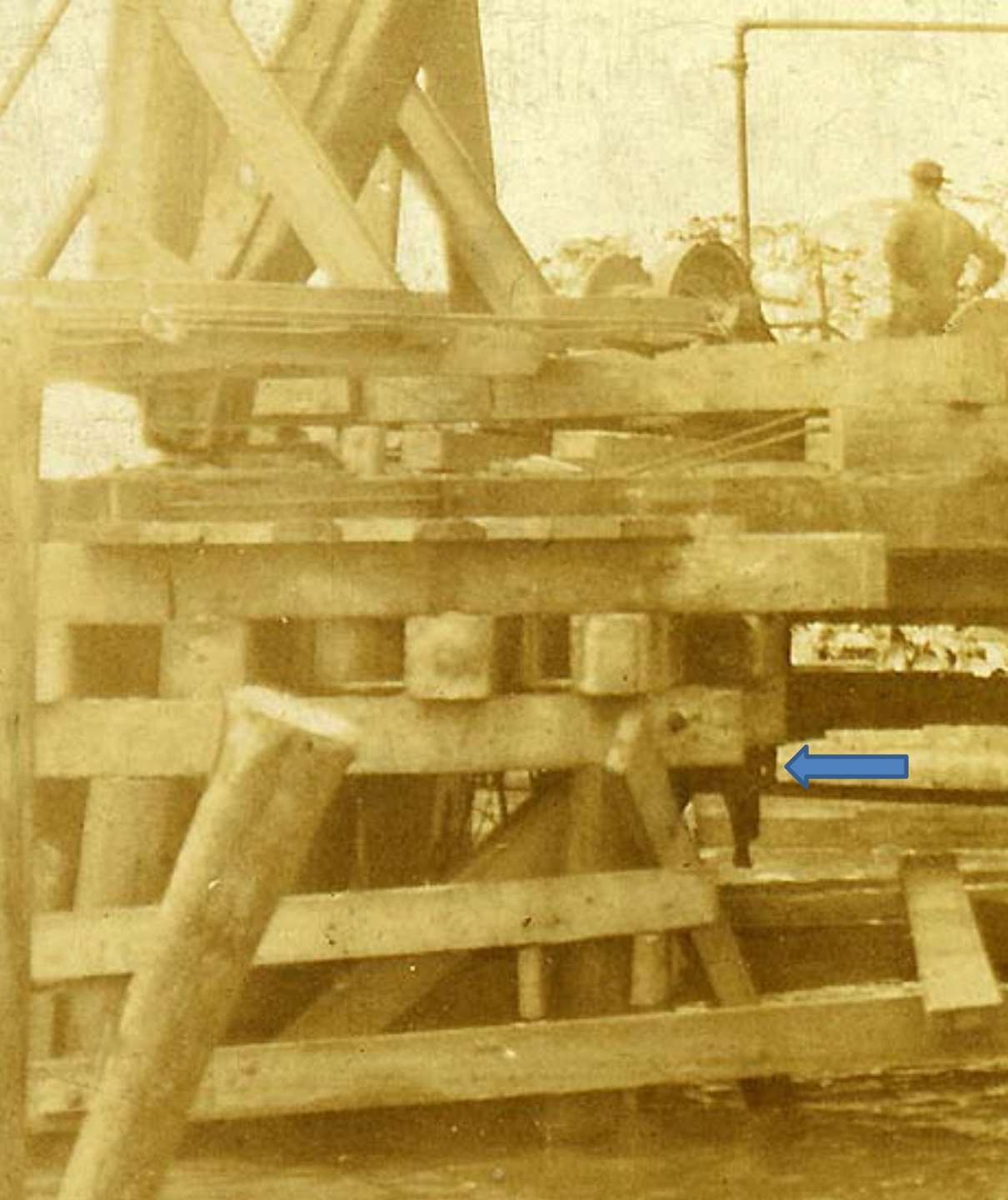


# 1920s Rikers Landfill Scene #12: Overall View

## *1920s Scenes of Rikers Rising from the River*

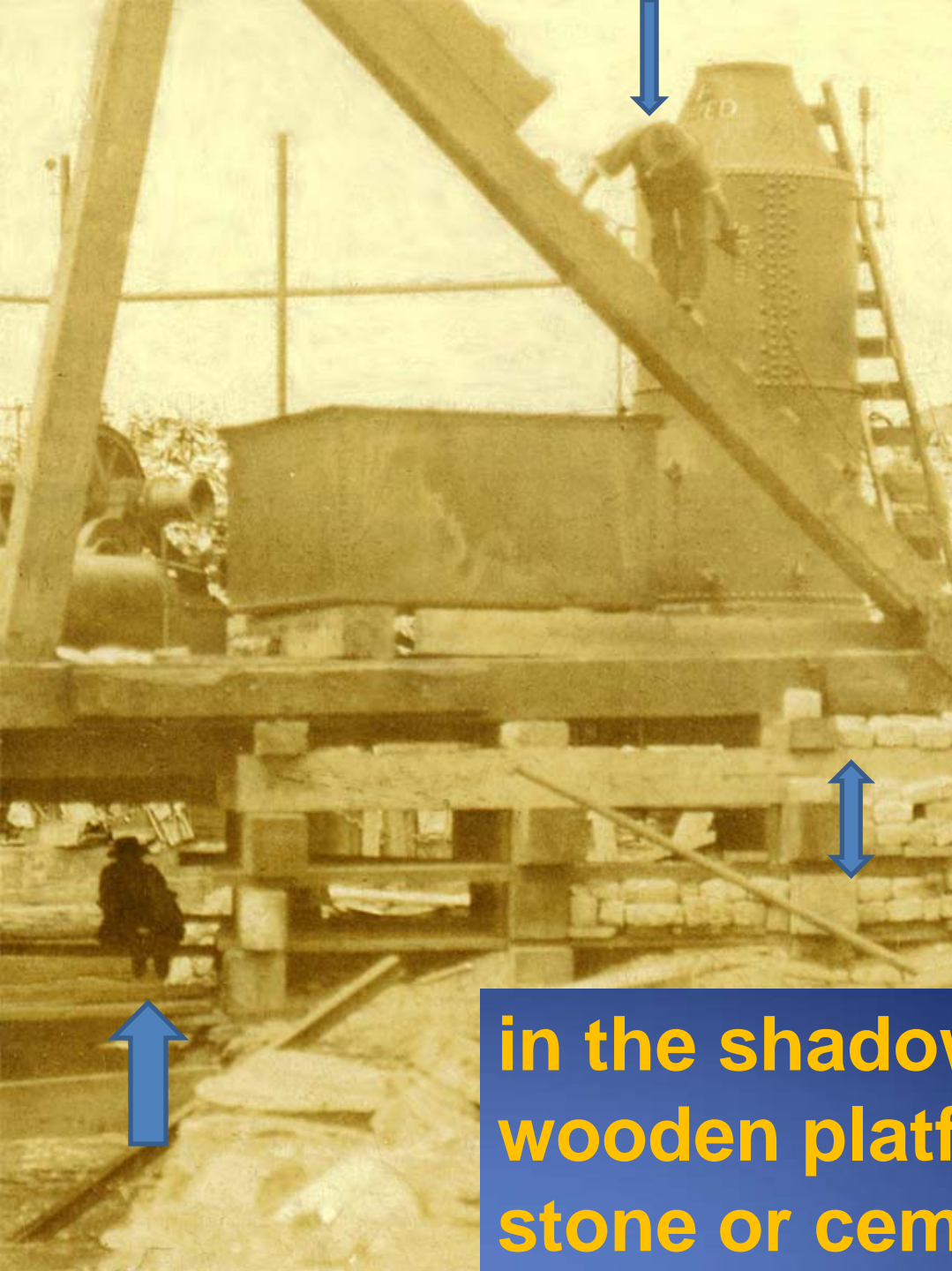


Because of its overall qualities, this scene was chosen as the presentation's logo.



## 1920s Scene #12: Close-up A (Far Left Section)

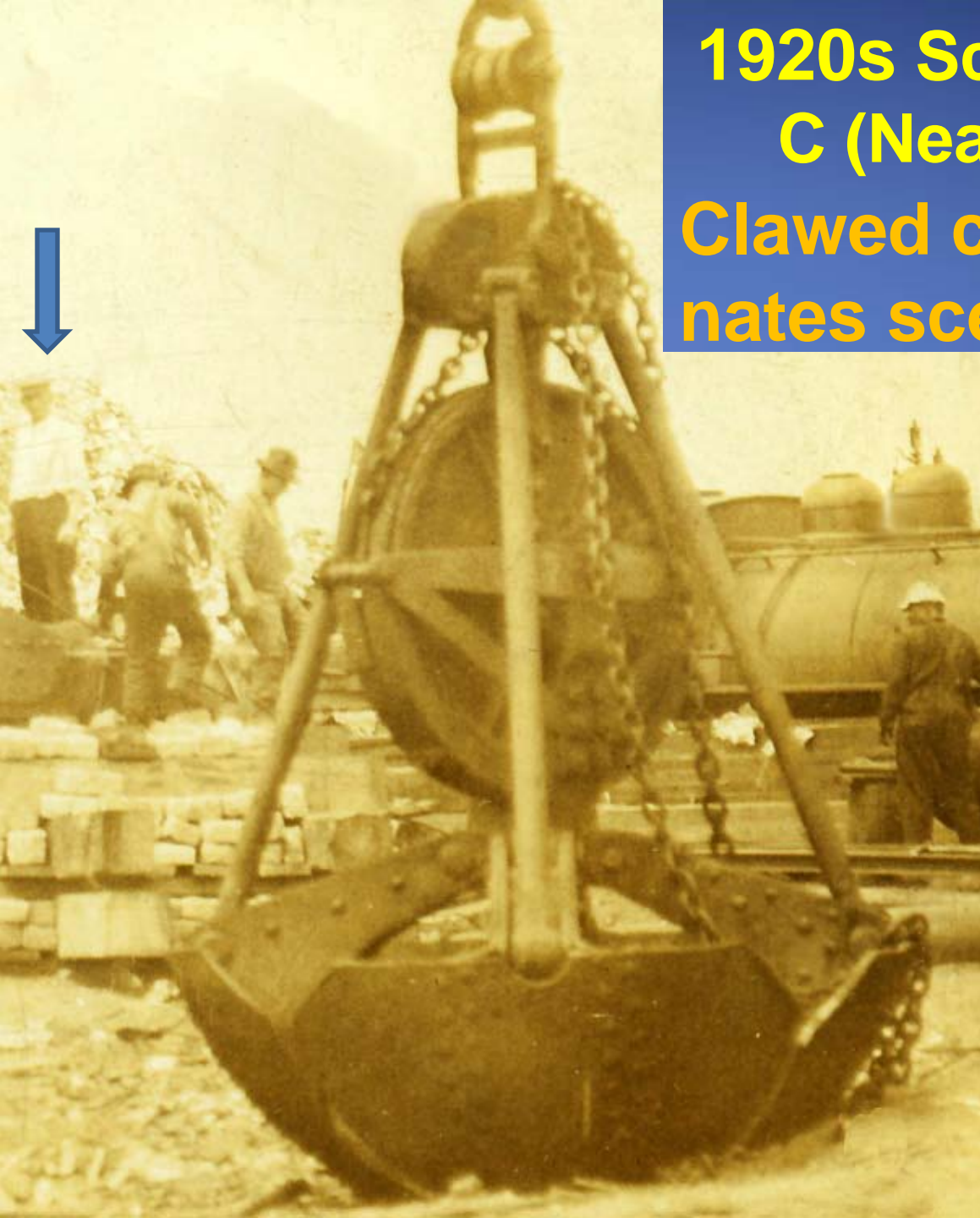
Workman, hands on back pockets, stands on wood platform over water, may be talking with the fellow workman seated below in the shadows.



## 1920s Scene #12: Close-up B (Near Left Section)

Workman climbs  
as he carries a part  
attached to a cable.  
He may also be  
talking with a  
colleague seen  
seated on a plank

in the shadows beneath the  
wooden platform. Note also the  
stone or cement blocks.

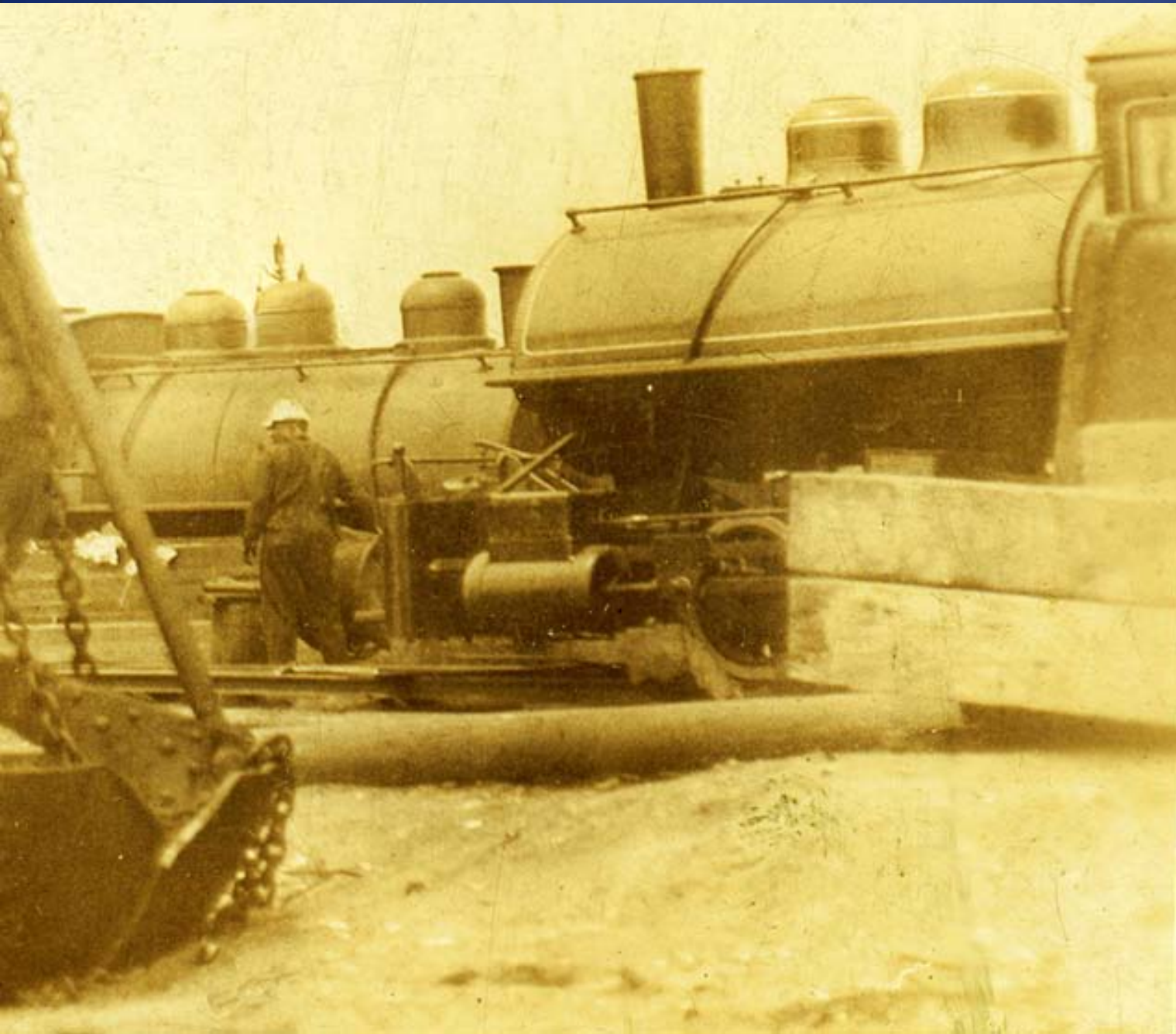


**1920s Scene #12: Close-up  
C (Near Right Section)  
Clawed clam shovel domi-  
nates scene. A supervisor**

**(white shirt shirt,  
suspenders,  
sunglasses, and  
uniform cap)  
eyes workmen  
fixing cable  
carried by  
climbing worker  
in prior slide.**



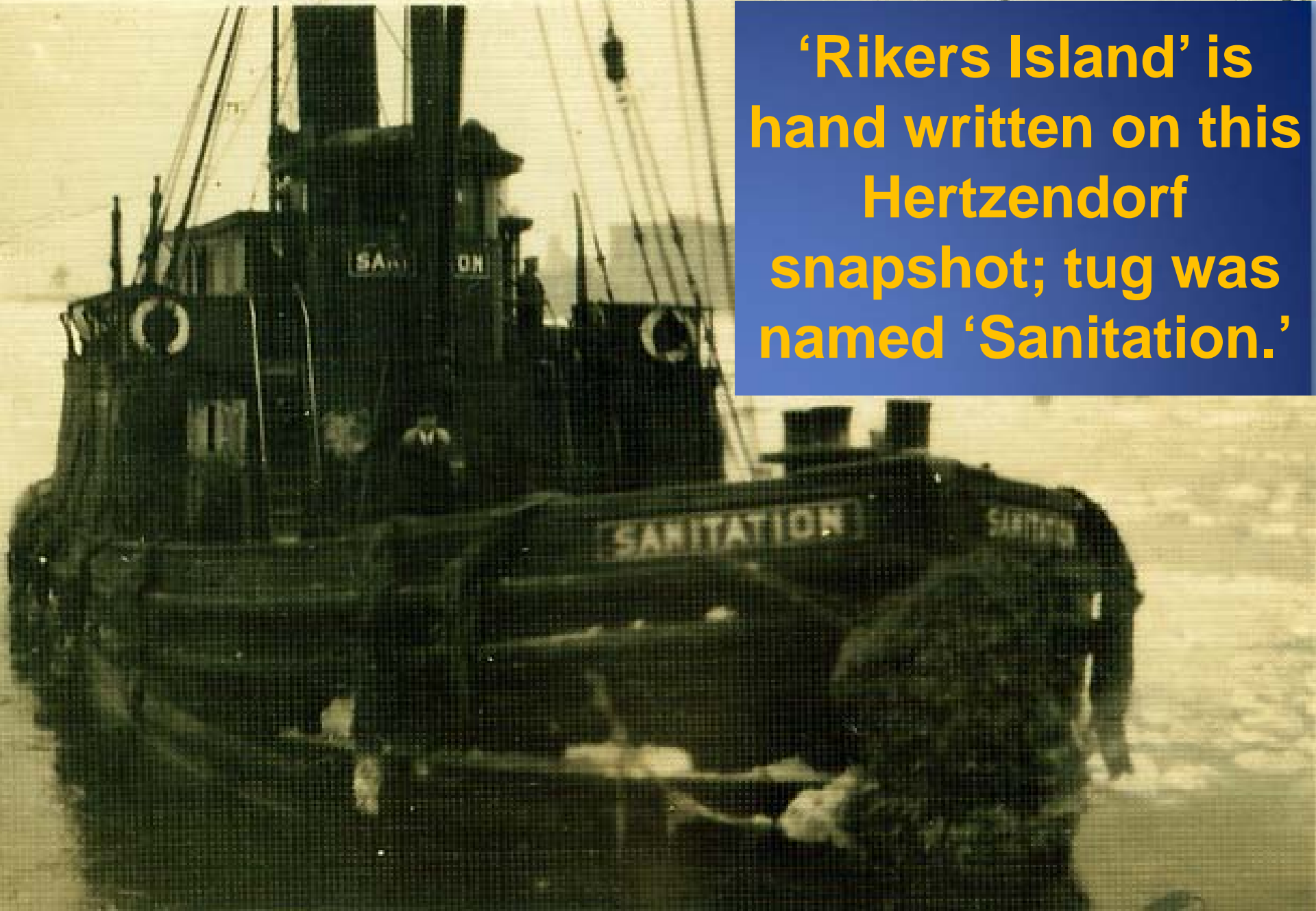
# 1920s Scene #12: Close-up D (Far Right Section)



**Worker  
tends  
one of  
the rail  
engines  
that  
push  
the train  
cars  
loaded  
with fill.**

RIKERS ISLAND

**‘Rikers Island’ is  
hand written on this  
Hertzendorf  
snapshot; tug was  
named ‘Sanitation.’**



[www.correctionhistory.org](http://www.correctionhistory.org)

The web  
resource  
for NY  
correction  
history



*7.000+ files*

of text &  
images  
totaling 70+  
megabytes.

NY Correction History Society